



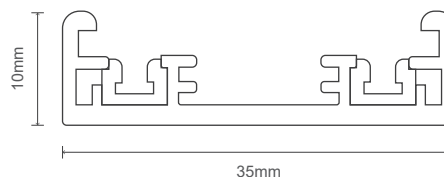
MAGNETIC T35 TRACK SYSTEM

Magnetic T35 Track System is a low voltage track with aluminum housing; no tools are required, as the adapters of the light fixture are installed using magnets; which gives the user flexibility to combine them in a variety of ways. This will then be powered by an DC48V transformer for the whole track system.

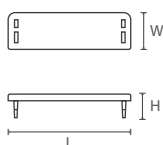
Recessed / Surface Track



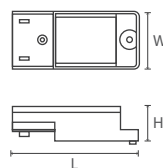
DU-TR-T35-1m
DU-TR-T35-2m
DU-TR-T35-3m



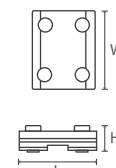
Accessories



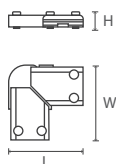
DU-TR-T35-END
Side Cover
(L) 35mm x (W) 10mm x (H) 6.8mm



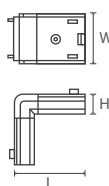
DU-TR-T35-E01
External Drive Conductor
(L) 77mm x (W) 35mm x (H) 20mm



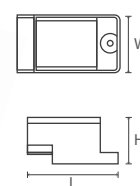
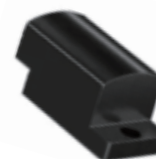
DU-TR-T35-T01
Linear Link Connector
(L) 32mm x (W) 40mm x (H) 12mm



DU-TR-T35-L01
Corner Connector
(L) 62mm x (W) 62mm x (H) 18mm



DU-TR-35-J01
Vertical Corner Connector
(L) 45mm x (W) 32mm x (H) 12mm



DU-TR-35-E02B
Track Cover
(L) 62mm x (W) 34mm x (H) 31mm

Magnetic LED driver



Technical Specifications

Model	Power	Input	Length	Width	Height
DU-DR-MG35-100	100W	220-240V	230mm	20mm	50mm
DU-DR-MG35-200	200W	220-240V	300mm	20mm	50mm



Model	Power [W]	Beam Angle	Dimension [DxH]
DU-MGT35-PNDeco-7W-101	7W	15°/24°/36°	Ø80mm x 90mm
DU-MGT35-PNDeco-7W-102	7W	40°	Ø80mm x 98mm
DU-MGT35-PNDeco-7W-201	7W	15°/24°/36°	Ø75mm x 79mm
DU-MGT35-PNDeco-7W-202	7W	40°	Ø75mm x 90mm
DU-MGT35-PNDeco-7W-301	7W	15°/24°/36°	Ø75mm x 89mm

Magnetic T35 Decorative LED Pendant Light

Magnetic T35 LED Pendant Light uses COB LED for indoor applications. Housing is made of Die-cast aluminum material.

Product Features

- COB LED
- Installation: Track Mounted
- Material: Die-cast aluminum
- IP Rating: IP20
- Life Span: 50,000 hours

90lm/W Luminous Efficacy	OPTIONAL	OPTIONAL
48VDC Input	630lm Luminous Flux	3000K 4000K 6500K CCT



Model	Power [W]	Luminous Flux (lm)	Dimension [DxH]
DU-MGT35-TR-6W	6W	540 lm	Ø35 x 80mm
DU-MGT35-TR-12W	12W	1080 lm	Ø45 x 100mm
DU-MGT35-TR-18W	18W	1620 lm	Ø60 x 120mm
DU-MGT35-TR-24W	24W	2160 lm	Ø80 x 130mm

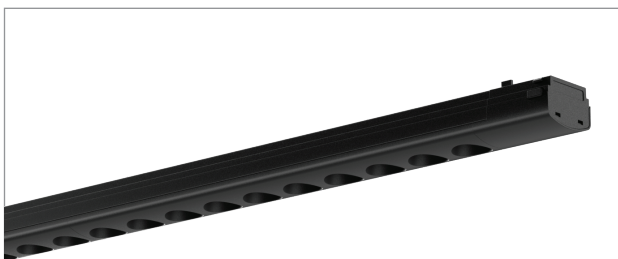
Magnetic T35 LED Track Light

Magnetic LED Track Light uses COB LED for indoor applications. Housing is made of Die-cast aluminum material.

Product Features

- COB LED
- Installation: Track Mounted
- Material: Die-cast aluminum
- IP Rating: IP20
- Life Span: 50,000 hours

90lm/W Luminous Efficacy	OPTIONAL	OPTIONAL
48VDC Input	15°/24°/36° Beam Angle	3000K 4000K 6500K CCT



Model	Power [W]	Luminous Flux (lm)	Dimension [LxWxH]
DU-MGT35-10W	10W	900 lm	332 x 35 x 24mm
DU-MGT35-20W	20W	1800 lm	597 x 35 x 24mm
DU-MGT35-30W	30W	2700 lm	864 x 35 x 24mm

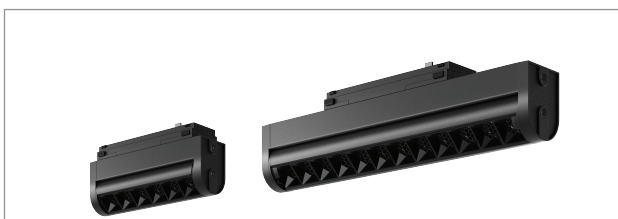
Magnetic T35 LED Spot Light

Magnetic LED Spot Light uses SMD LEDs for indoor applications. Housing is made of Die-cast aluminum material.

Product Features

- SMD LEDs
- Installation: Track Mounted
- Material: Die-cast aluminum
- IP Rating: IP20
- Life Span: 50,000 hours

90lm/W Luminous Efficacy	OPTIONAL	OPTIONAL
48VDC Input	15°/24°/36° Beam Angle	3000K 4000K 6500K CCT



Model	Power [W]	Luminous Flux (lm)	Dimension [DxH]
DU-MGT35-SPAJ-6W-128	6W	540 lm	128 x 35 x 59mm
DU-MGT35-SPAJ-12W-236	12W	1080 lm	236 x 34 x 59mm
DU-MGT35-SPAJ-18W-343	18W	1620 lm	343 x 34 x 59mm
DU-MGT35-SPAJ-24W-452	24W	2160 lm	452 x 34 x 59mm

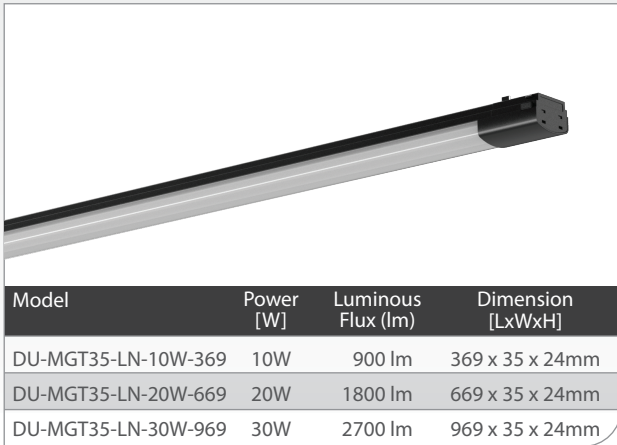
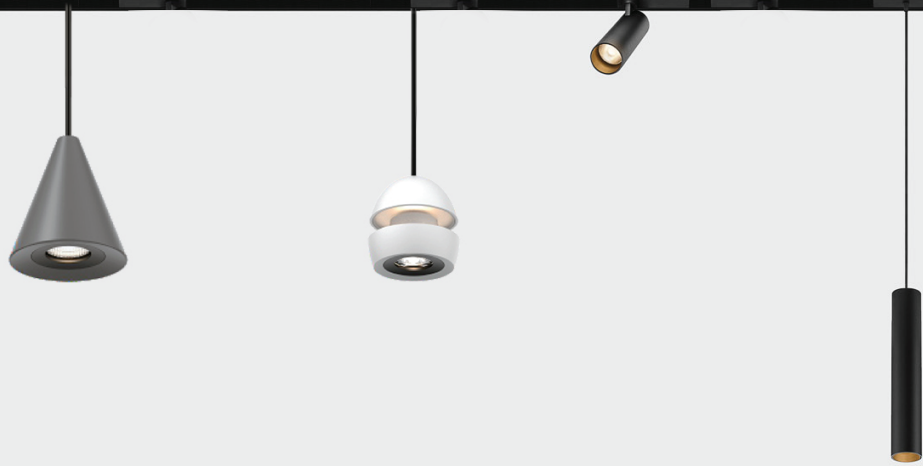
Magnetic T35 Adjustable LED Spot Light

Magnetic T35 Adjustable LED Spot Light uses SMD LEDs for indoor applications. Housing is made of Die-cast aluminum material.

Product Features

- SMD LEDs
- Installation: Track Mounted
- Material: Die-cast aluminum
- IP Rating: IP20
- Life Span: 50,000 hours

90lm/W Luminous Efficacy	OPTIONAL	OPTIONAL
48VDC Input	15°/24°/36° Beam Angle	3000K 4000K 6500K CCT



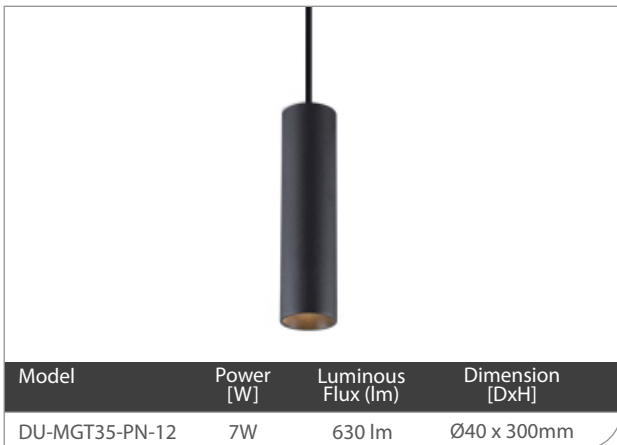
Magnetic T35 LED Linear Light

Magnetic T35 LED Linear Light uses SMD LEDs for indoor applications. Housing is made of Die-cast aluminum material.

Product Features

- SMD LEDs
- Installation: Track Mounted
- Material: Die-cast aluminum
- IP Rating: IP20
- Life Span: 50,000 hours

<p>90lm/W Luminous Efficacy</p>	<p>OPTIONAL</p>	<p>OPTIONAL</p>
<p>48vDC Input</p>	<p>100° Beam Angle</p>	<p>3000K 4000K 6500K CCT</p>



Magnetic T35 LED Pendant Light

Magnetic T35 LED Pendant Light uses COB LED for indoor applications. Housing is made of Die-cast aluminum material.

Product Features

- COB LED
- Installation: Track Mounted
- Material: Die-cast aluminum
- IP Rating: IP20
- Life Span: 50,000 hours

<p>90lm/W Luminous Efficacy</p>	<p>OPTIONAL</p>	<p>OPTIONAL</p>
<p>48vDC Input</p>	<p>15°/24°/36° Beam Angle</p>	<p>3000K 4000K 6500K CCT</p>