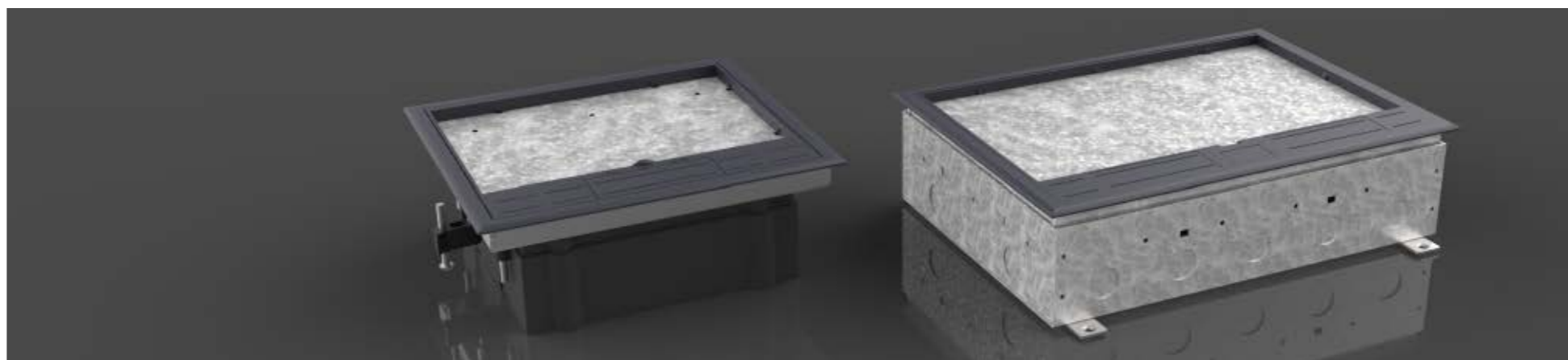




LEVANT

**FLOOR
BOXES**

2022-2023



FLOOR BOXES

POP-UP POWER OUTLETS

Our comprehensive range of pop-up power outlets offers a convenient source of power and data connections integrated directly into the floor or countertops, bringing accessibility right where you need it.

Features a sleek low-profile design and unique pop up cover that recesses into the surface when not in use, which creates discreet and neat appearance to enhance your working environment.

Now more versatile than ever, these units can accommodate different types of modules and are available in a range of finishes making them ideal work surface essential for residential and commercial applications.



POP-UP POWER OUTLETS

Features

Suitable for installation within:



Meeting Rooms



Office



Kitchen



Coffee Shop



Study Room



Bedroom

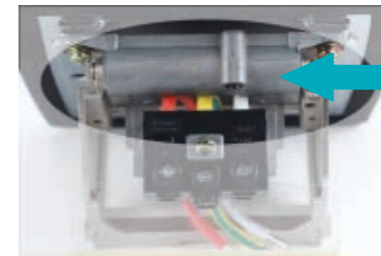
... ..

- Provides safe and convenient access to power & data outlets when required without compromising the look.
- Perfectly complements any contemporary interior and enables the reputation for quality & reliability not to be compromised.



- ◀ **Practical solution for various applications:**
These units can be easily installed on both floor (concrete and raised access) applications and desk/countertop applications.

Two Variants of Opening Mechanism



Soft pop-up mechanism
(Pop up speed 1~3s, adjustable)



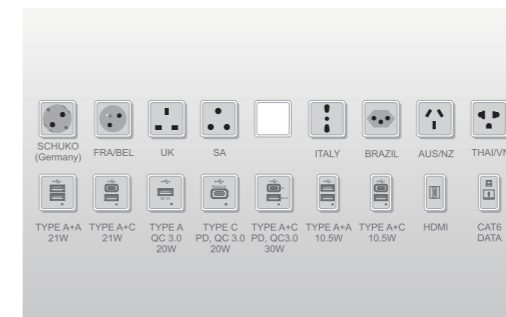
- ◀ **Maximum resistance:**
The pop-up cover locking system provides the extent to endure from any pressure to protect the cable when connected.



Fast pop-up mechanism
(Pop up speed<0.1s)



- ◀ **Weatherproof protection:**
When in closed position, the seal provides a good level of protection against dust particles and water splashes to ensure extended product longevity.



- ◀ **Choose more:**
Extensive range of modules option.

**The modules shown do not represent all, please consult our sales representative for more modules information.*

POP-UP POWER OUTLETS

LV-FBG-1:

Features

IP42

Module Capacity: 3 Modules

Approval: TUV, CE, REACH, RoHS

Equipped with simple **Press and Slide tab** which allows access to power and data outlets to emerge above the work surface when required for easy access.



IK10

FBG-1BE
FBG-1SE



FBG-1BE
FBG-1BE+D



FBG-1SE
FBG-1SE+D



FBG-1B
FBG-1B+D

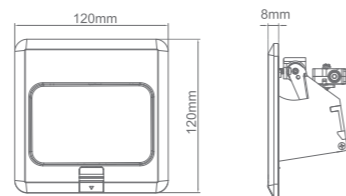


FBG-1BN
FBG-1BN+D



FBG-1L
FBG-1L+D

Model	Color	Material	Mechanism	Cutout(mm)
FBG-1BE	Gold	Brass	Fast pop up	103x103
FBG-1BE+D	Gold	Brass	Soft pop up	103x103
FBG-1SE	Silver	Stainless Steel	Fast pop up	103x103
FBG-1SE+D	Silver	Stainless Steel	Soft pop up	103x103
FBG-1B	Gold	Brass	Fast pop up	103x103
FBG-1B+D	Gold	Brass	Soft pop up	103x103
FBG-1BN	Silver(Nickel Plated)	Brass	Fast pop up	103x103
FBG-1BN+D	Silver(Nickel Plated)	Brass	Soft pop up	103x103
FBG-1L	Silver	Aluminum	Fast pop up	103x103
FBG-1L+D	Silver	Aluminum	Soft pop up	103x103



Features

IP42

Module Capacity: 3 Modules

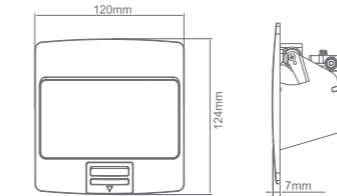
Approval: TUV, CE, RoHS



Features a **stylish and user-friendly slide tab** which allows convenient access to power, charging and data outlets when required.



Subtle finish and appealing design with rounded corners perfectly complement any contemporary living or working space.



POP-UP POWER OUTLETS

LV-FBG-2:



FBG-2B
FBG-2B+D



FBG-2SE
FBG-2SE+D



FBG-2L
FBG-2L+D

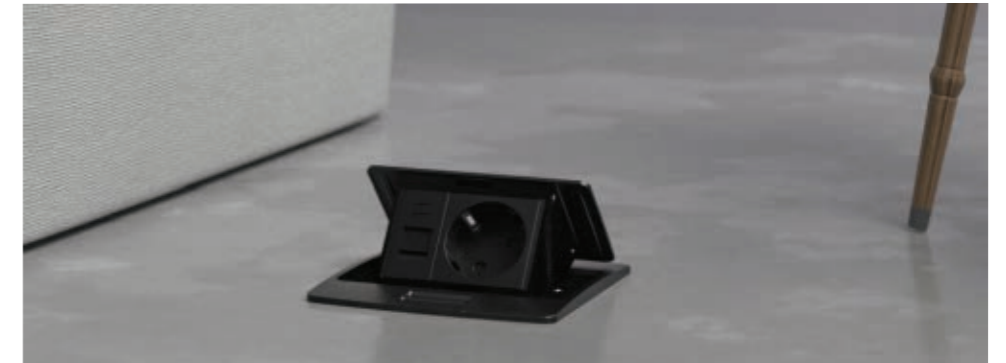


FBG-2L
FBG-2L+D



FBG-2LMB
FBG-2LMB+D

Model	Color	Material	Mechanism	Cutout(mm)
FBG-2B	Gold	Brass	Fast pop up	103x105
FBG-2B+D	Gold	Brass	Soft pop up	103x105
FBG-2SE	Silver	Stainless Steel	Fast pop up	103x105
FBG-2SE+D	Silver	Stainless Steel	Soft pop up	103x105
FBG-2BE	Gold	Brass	Fast pop up	103x105
FBG-2BE+D	Gold	Brass	Soft pop up	103x105
FBG-2L	Silver	Aluminum Alloy	Fast pop up	103x105
FBG-2L+D	Silver	Aluminum Alloy	Soft pop up	103x105
FBG-2LMB	Matte Black	Aluminum Alloy	Fast pop up	103x105
FBG-2LMB+D	Matte Black	Aluminum Alloy	Soft pop up	103x105



POP-UP POWER OUTLETS

LV-FBG-3:



▲
FBG-3B
FBG-3B+D



▲
FBG-3S
FBG-3S+D

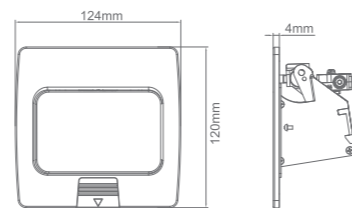
Features

IP42 IK10

Module Capacity: 3 Modules

Approval: TUV, CE, REACH, RoHS

Equipped with simple **Press and Slide tab** which allows access to power and data outlets to emerge above the work surface when required for easy access.



Model	Color	Material	Mechanism	Cutout(mm)
FBG-3B	Gold	Brass	Fast pop up	103x103
FBG-3B+D	Gold	Brass	Soft pop up	103x103
FBG-3S	Silver	Stainless Steel	Fast pop up	103x103
FBG-3S+D	Silver	Stainless Steel	Soft pop up	103x103



LV-FBG-4:



▲
FBG-4B
FBG-4B+D



▲
FBG-4S
FBG-4S+D

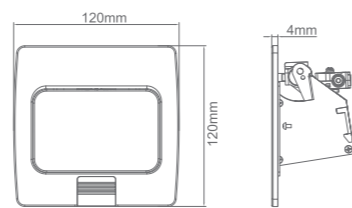
Features

IP42 IK10

Module Capacity: 3 Modules

Approval: TUV, CE, REACH, RoHS

Equipped with simple **Press and Slide tab** which allows access to power and data outlets to emerge above the work surface when required for easy access.



Model	Color	Material	Mechanism	Cutout(mm)
FBG-4B	Gold	Brass	Fast pop up	103x103
FBG-4B+D	Gold	Brass	Soft pop up	103x103
FBG-4S	Silver	Stainless Steel	Fast pop up	103x103
FBG-4S+D	Silver	Stainless Steel	Soft pop up	103x103

POP-UP POWER OUTLETS

LV-FBG-5:



▲
FBG-5B
FBG-5B+D



▲
FBG-5S
FBG-5S+D

Features

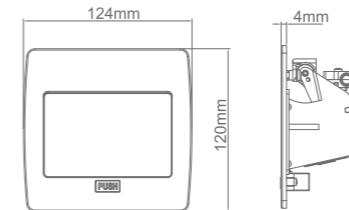
IP44 IK10

Module Capacity: 3 Modules

Approval: TUV, CE, REACH, RoHS

Equipped with simple **Press button** which allows access to power and data outlets to emerge above the work surface when required for easy access.

Patent No: CN204243323U



Model	Color	Material	Mechanism	Cutout(mm)
FBG-5B	Gold	Brass	Fast pop up	103x103
FBG-5B+D	Gold	Brass	Soft pop up	103x103
FBG-5S	Silver	Stainless Steel	Fast pop up	103x103
FBG-5S+D	Silver	Stainless Steel	Soft pop up	103x103



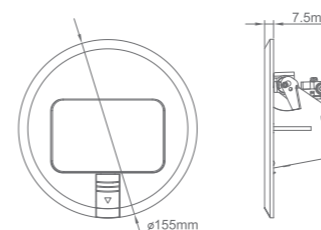
Features

IP42

Module Capacity: 3 Modules

Approval: TUV, CE, REACH, RoHS

Equipped with simple **Press and Slide tab** which allows access to power and data outlets to emerge above the work surface when required for easy access.



LV-FBG-8:



▲
FBG-8B
FBG-8B+D



▲
FBG-8BN
FBG-8BN+D

Model	Color	Material	Mechanism	Cutout(mm)
FBG-8B	Gold	Brass	Fast pop up	103x103
FBG-8B+D	Gold	Brass	Soft pop up	103x103
FBG-8BN	Silver(Nickel Plated)	Brass	Fast pop up	103x103
FBG-8BN+D	Silver(Nickel Plated)	Brass	Soft pop up	103x103

POP-UP POWER OUTLETS

LV-FBG-12:



FBG-12L
FBG-12L+D

Model	Color	Material	Mechanism	Cutout(mm)
FBG-12L	Silver	Aluminum	Fast pop up	203x103
FBG-12L+D	Silver	Aluminum	Soft pop up	203x103



LV-FBG-13:



FBG-13B
FBG-13B+D



FBG-13L
FBG-13L+D



FBG-13LMB
FBG-13LMB+D



FBG-13LW
FBG-13LW+D

Model	Color	Material	Mechanism	Cutout(mm)
FBG-13B	Gold	Brass	Fast pop up	203x103
FBG-13B+D	Gold	Brass	Soft pop up	203x103
FBG-13L	Silver	Aluminum	Fast pop up	203x103
FBG-13L+D	Silver	Aluminum	Soft pop up	203x103
FBG-13LMB	Matte Black	Aluminum	Fast pop up	203x103
FBG-13LMB+D	Matte Black	Aluminum	Soft pop up	203x103
FBG-13LW	White	Aluminum	Fast pop up	203x103
FBG-13LW+D	White	Aluminum	Soft pop up	203x103

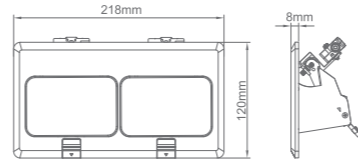
Features

IP42

Module Capacity: 6 Modules

Approval: TUV, CE, REACH, RoHS

Equipped with simple **Press and Slide tab** which allows access to power and data outlets to emerge above the work surface when required for easy access.



Features

IP42

Module Capacity: 6 Modules

Approval: TUV, CE, REACH, RoHS

Equipped with simple **Press and Slide tab** which allows access to power and data outlets to emerge above the work surface when required for easy access.

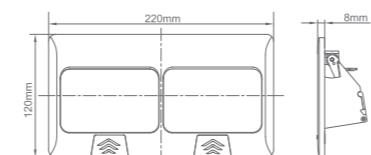
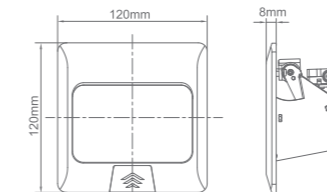
Features

IP42

Module Capacity: 3 Modules

Approval: TUV, CE, REACH, RoHS

Equipped with simple **Press and Slide tab** which allows access to power and data outlets to emerge above the work surface when required for easy access.



POP-UP POWER OUTLETS

LV-FBG-16:



FBG-16B
FBG-16B+D



FBG-16L
FBG-16L+D



FBG-16LMB
FBG-16LMB+D



FBG-16LW
FBG-16LW+D

Model	Color	Material	Mechanism	Cutout(mm)
FBG-16B	Gold	Brass	Fast pop up	103x103
FBG-16B+D	Gold	Brass	Soft pop up	103x103
FBG-16L	Silver	Aluminum	Fast pop up	103x103
FBG-16L+D	Silver	Aluminum	Soft pop up	103x103
FBG-16LMB	Matte Black	Aluminum	Fast pop up	103x103
FBG-16LMB+D	Matte Black	Aluminum	Soft pop up	103x103
FBG-16LW	White	Aluminum	Fast pop up	103x103
FBG-16LW+D	White	Aluminum	Soft pop up	103x103



POP-UP POWER OUTLETS

LV-FBG-18:



FBG-18B
FBG-18B+D



FBG-18L
FBG-18L+D



FBG-18LMB
FBG-18LMB+D



FBG-18LW
FBG-18LW+D

Model	Color	Material	Mechanism	Cutout(mm)
FBG-18B	Gold	Brass	Fast pop up	103x103
FBG-18B+D	Gold	Brass	Soft pop up	103x103
FBG-18L	Silver	Aluminum	Fast pop up	103x103
FBG-18L+D	Silver	Aluminum	Soft pop up	103x103
FBG-18LMB	Matte Black	Aluminum	Fast pop up	103x103
FBG-18LMB+D	Matte Black	Aluminum	Soft pop up	103x103
FBG-18LW	White	Aluminum	Fast pop up	103x103
FBG-18LW+D	White	Aluminum	Soft pop up	103x103

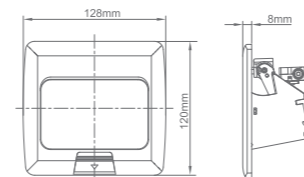
Features

IP42

Module Capacity: 3 Modules

Approval: TUV, CE, REACH, RoHS

Equipped with simple **Press and Slide tab** which allows access to power and data outlets to emerge above the work surface when required for easy access.



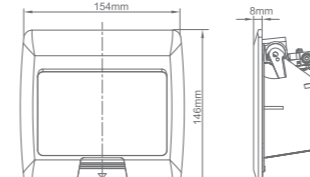
Features

IP42

Module Capacity: 4 Modules

Approval: TUV, CE, REACH, RoHS

Equipped with simple **Press and Slide tab** which allows access to power and data outlets to emerge above the work surface when required for easy access.



POP-UP POWER OUTLETS

LV-FBG-28:



FBG-28B
FBG-28B+D



FBG-28L
FBG-28L+D



FBG-28LMB
FBG-28LMB+D

Model	Color	Material	Mechanism	Cutout(mm)
FBG-28B	Gold	Brass	Fast pop up	123x123
FBG-28B+D	Gold	Brass	Soft pop up	123x123
FBG-28L	Silver	Aluminum	Fast pop up	123x123
FBG-28L+D	Silver	Aluminum	Soft pop up	123x123
FBG-28LMB	Matte Black	Aluminum	Fast pop up	123x123
FBG-28LMB+D	Matte Black	Aluminum	Soft pop up	123x123

LV-FBG-26:



FBG-26B
FBG-26B+D



FBG-26L
FBG-26L+D



FBG-26LMB
FBG-26LMB+D



FBG-26LW
FBG-26LW+D

Model	Color	Material	Mechanism	Cutout(mm)
FBG-26B	Gold	Brass	Fast pop up	123x123
FBG-26B+D	Gold	Brass	Soft pop up	123x123
FBG-26L	Silver	Aluminum	Fast pop up	123x123
FBG-26L+D	Silver	Aluminum	Soft pop up	123x123
FBG-26LMB	Matte Black	Aluminum	Fast pop up	123x123
FBG-26LMB+D	Matte Black	Aluminum	Soft pop up	123x123
FBG-26LW	White	Aluminum	Fast pop up	123x123
FBG-26LW+D	White	Aluminum	Soft pop up	123x123

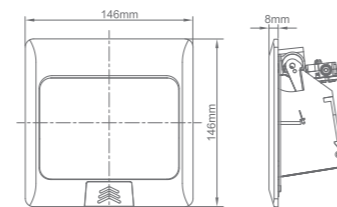
Features

IP42

Module Capacity: 4 Modules

Approval: TUV, CE, REACH, RoHS

Equipped with simple **Press and Slide tab** which allows access to power and data outlets to emerge above the work surface when required for easy access.



Features

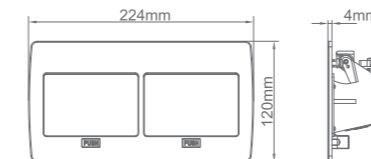
IP44 IK10

Module capacity: 6 modules

Approval: TUV, CE, REACH, RoHS

Equipped with simple **Press button** which allows access to power and data outlets to emerge above the work surface when required for easy access.

Patent No: CN204243323U



LV-FBG-52:



FBG-52B
FBG-52B+D



FBG-52S
FBG-52S+D

Model	Color	Material	Mechanism	Cutout(mm)
FBG-52B	Gold	Brass	Fast pop up	203x103
FBG-52B+D	Gold	Brass	Soft pop up	203x103
FBG-52S	Silver	Stainless Steel	Fast pop up	203x103
FBG-52S+D	Silver	Stainless Steel	Soft pop up	203x103



POP-UP POWER OUTLETS

LV-FBG-54 :



▲ FBG-54B
FBG-54B+D



▲ FBG-54L
FBG-54L+D



▲ FBG-54LMB
FBG-54LMB+D



▲ FBG-54LW
FBG-54LW+D

Model	Color	Material	Mechanism	Cutout(mm)
FBG-54B	Gold	Brass	Fast pop up	253x128
FBG-54B+D	Gold	Brass	Soft pop up	253x128
FBG-54L	Silver	Aluminum	Fast pop up	253x128
FBG-54L+D	Silver	Aluminum	Soft pop up	253x128
FBG-54LMB	Matte Black	Aluminum	Fast pop up	253x128
FBG-54LMB+D	Matte Black	Aluminum	Soft pop up	253x128
FBG-54LW	White	Aluminum	Fast pop up	253x128
FBG-54LW+D	White	Aluminum	Soft pop up	253x128

LV-FBG-56 :



▲ FBG-56L
FBG-56L+D



▲ FBG-56LMB
FBG-56LMB+D



▲ FBG-56B
FBG-56B+D

Model	Color	Material	Mechanism	Cutout(mm)
FBG-56L	Silver	Aluminum	Fast pop up	253x123
FBG-56L+D	Silver	Aluminum	Soft pop up	253x123
FBG-56LMB	Matte Black	Aluminum	Fast pop up	253x123
FBG-56LMB+D	Matte Black	Aluminum	Soft pop up	253x123
FBG-56B	Gold	Brass	Fast pop up	253x123
FBG-56B+D	Gold	Brass	Soft pop up	253x123

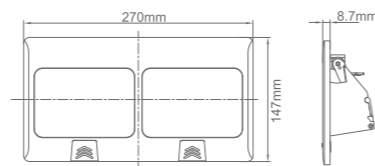
Features

IP42

Module capacity: 8 modules

Approval: REACH, RoHS

Equipped with simple **Press and Slide tab** which allows access to power and data outlets to emerge above the work surface when required for easy access.



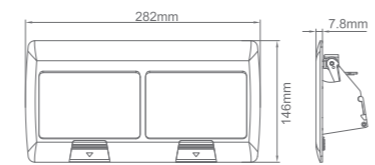
Features

IP42

Module capacity: 8 modules

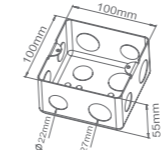
Approval: REACH, RoHS

Equipped with simple **Press and Slide tab** which allows access to power and data outlets to emerge above the work surface when required for easy access.

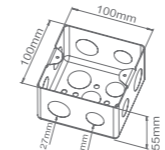


POP-UP POWER OUTLETS

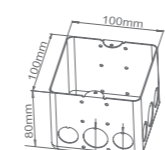
Optional base boxes



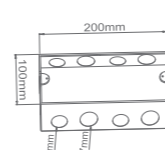
◀ FBG-100



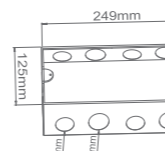
◀ FBG-100L



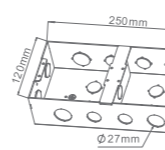
◀ FBG-100H



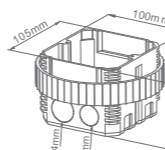
◀ FBG-200



◀ FBG-260



◀ FBG-280



◀ FBG-105



▲ FBG-100

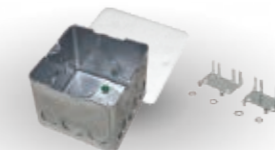
Recommended robust base box
(Box depth can be customized)



▲ FBG-100L

Steel base box(Economic)

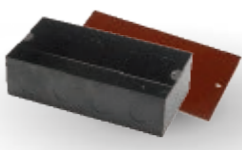
Suitable models: FBG-1, FBG-2, FBG-3, FBG-4, FBG-5, FBG-8, FBG-26, FBG-18 series.



▲ FBG-100H

High volume base box.

Suitable models: FBG-1, FBG-2, FBG-3, FBG-4, FBG-5, FBG-8, FBG-26, FBG-18 series.



▲ FBG-200

Regular base box.

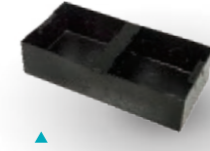
Suitable models: FBG-12, FBG-13 series.



▲ FBG-260

Galvanized steel box.

Suitable models: FBG-54 series.



▲ FBG-280

Desktop/counter installation base box.

Suitable models: FBG-56 series.



▲ FBG-105

Desktop/kitchen countertop installation base box.

Suitable models: FBG-1, FBG-2, FBG-3, FBG-4, FBG-5, FBG-8, FBG-26, FBG-18 series.

Patent No: CN204243323U

Model	Material	Application	Dimension(mm)
FBG-100	Galvanized Steel	Floor	100x100x55
FBG-100L	Steel	Floor	100x100x55
FBG-100H	Galvanized Steel	Desktop/Floor	100x100x80
FBG-200	Steel	Floor	200x100x55
FBG-260	Galvanized Steel	Floor	249x125x65
FBG-280	Galvanized Steel	Floor	250x120x60
FBG-105	PC+ABS	Desktop	100x105x80

WATERPROOF FLOOR OUTLET BOXES

Our waterproof range of series floor outlet boxes are specially designed for floor applications which require plug-in power & data connections and high level of protection against water.

When in closed position, our sturdy floor outlet boxes are IP66 and IP65 rated, which ensures advanced protection from total dust ingress & high-pressure water jets from any direction.

Features a durable and non-corrosive structure to guarantee longer product lifespan, while the cover locking system provides the extent to endure from any pressure to protect the cable when connected.

With ease of access and a range of modules customization options, makes these floor outlet boxes ideal for indoor and outdoor use where longevity is essential.

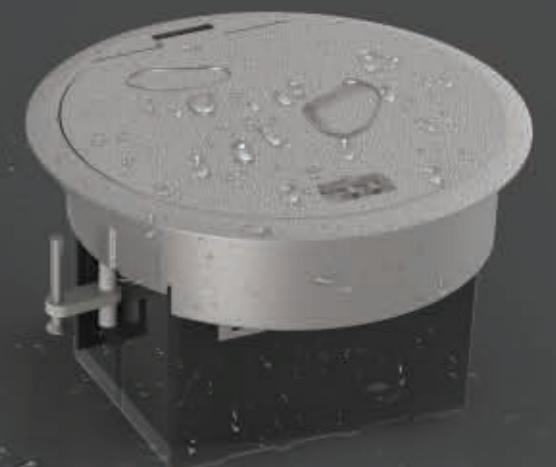
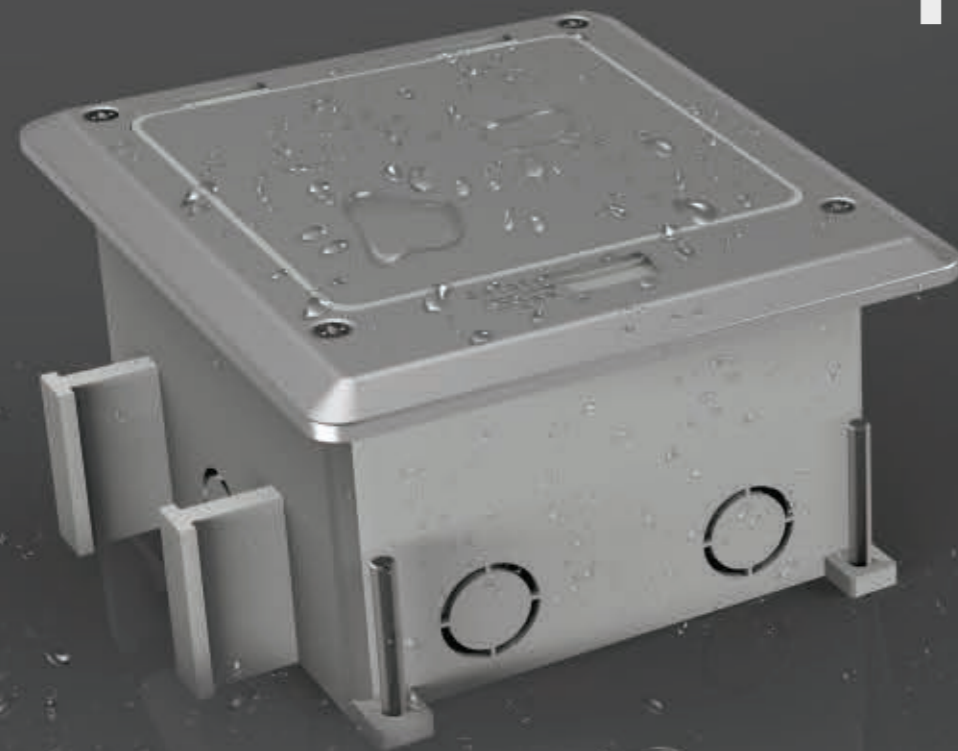


LV-FBG-452/453



LV-FBG-454

LV-FBG-455



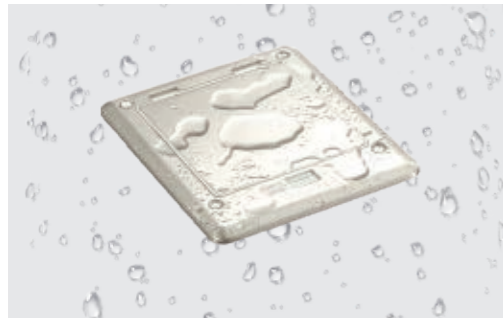
WATERPROOF SERIES

Features



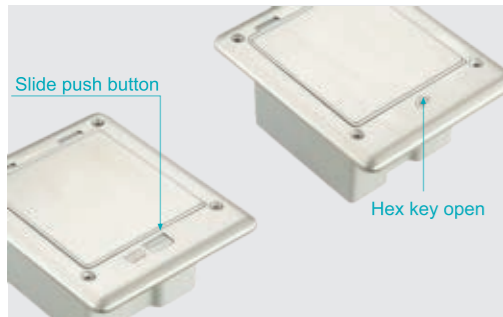
Maximum resistance:

When connected, the lid securing system can endure the weight of pedestrians while shielding the exiting cables from any pressure and stress.



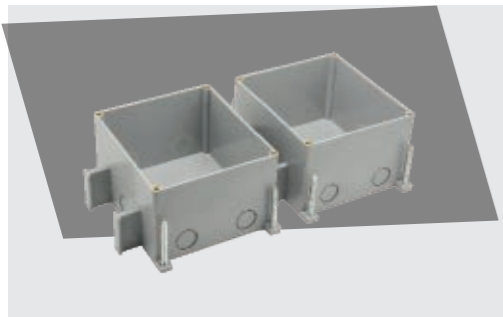
IP66 weatherproof protection:

When in closed position, IP66 rated seal provides almost complete protection from particles and a good level of protection against water.



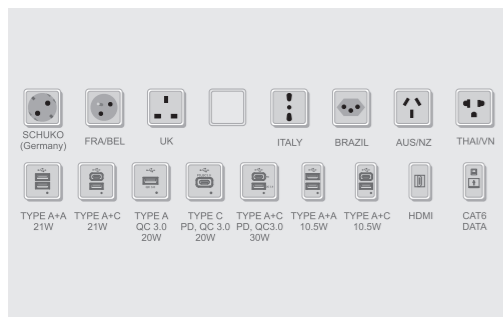
Two opening mechanisms:

You can choose from a slide push button or hex key opening mechanism.



Gangable installation for concrete floors:

Allows you to create a multiple gang floor box to accommodate several connection points for concrete floor applications.

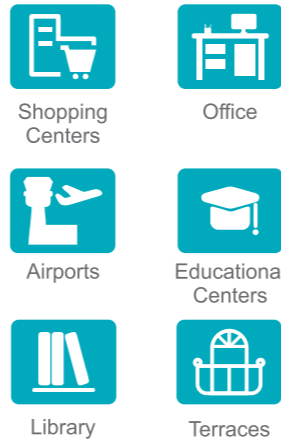


Choose more:

Extensive range of modules option.

**The modules shown do not represent all, please consult our sales representative for more modules information.*

Suitable for installation within:



With 3 modules capacity (Type 45 series).



With 6 modules capacity (Type 45 series).

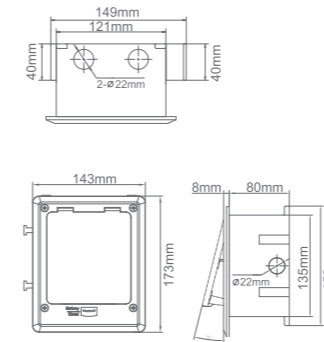


IK10

Features

IP66 IK10

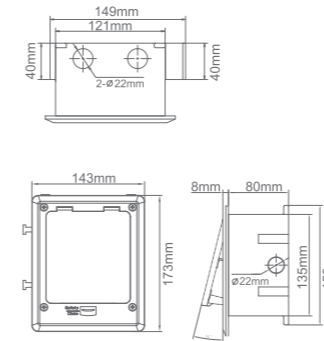
Application: Access Floor, Concrete Floor



FBG-452



Patent No: CN205385145U



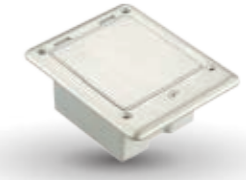
FBG-453

WATERPROOF SERIES

LV-FBG-452 :



FBG-452SFA



FBG-452SHA



FBG-452SFC



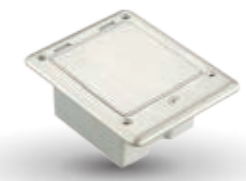
FBG-452SHC

Model	Color	Material	Opening Mechanism	Application	Cutout(mm)
FBG-452SFA	Silver	Stainless Steel	Slide Push Button	Access Floor	120x135
FBG-452SHA	Silver	Stainless Steel	Hex Key	Access Floor	120x135
FBG-452SFC	Silver	Stainless Steel	Slide Push Button	Concrete Floor	120x135
FBG-452SHC	Silver	Stainless Steel	Hex Key	Concrete Floor	120x135

LV-FBG-453 :



FBG-453SFA



FBG-453SHA



FBG-453SFC



FBG-453SHC

Model	Color	Material	Opening Mechanism	Application	Cutout(mm)
FBG-453SFA	Silver	Stainless Steel	Slide Push Button	Access Floor	120x135
FBG-453SHA	Silver	Stainless Steel	Hex Key	Access Floor	120x135
FBG-453SFC	Silver	Stainless Steel	Slide Push Button	Concrete Floor	120x135
FBG-453SHC	Silver	Stainless Steel	Hex Key	Concrete Floor	120x135

WATERPROOF SERIES

Features



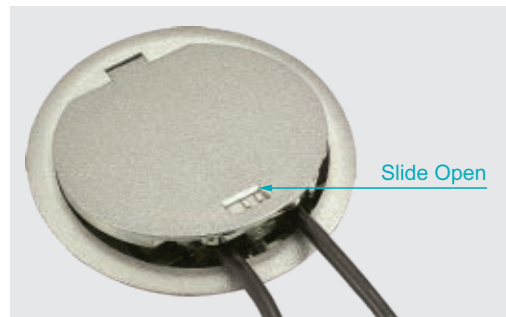
Maximum resistance:

When connected, the lid securing system can endure the weight of pedestrians while shielding the exiting cables from any pressure and stress.



IP65 weatherproof protection:

When in closed position, IP65 seal provides almost complete protection from particles and a good level of protection against water.



Slide Open

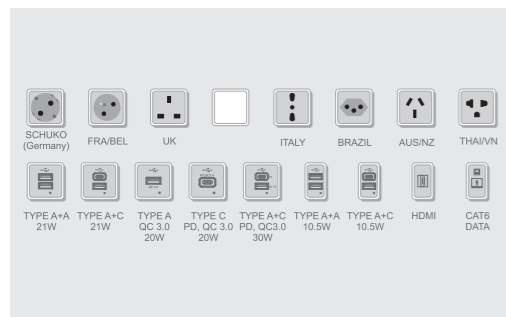
Secured opening mechanism:

Equipped with "slide open" mechanism to avoid accidental opening by feet.



Different types of finishes:

Equipped with scratch resistant zinc alloy panel, these floor outlet boxes are available in four different finishes: Silver, Old Brass, Red Copper and Gold, which will fit in with your design seamlessly.

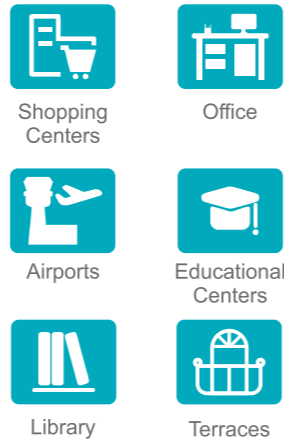


Choose more:

Extensive range of modules option.

**The modules shown do not represent all, please consult our sales representative for more modules. information.*

Suitable for installation within:



IP65



IK10

WATERPROOF SERIES

LV-FBG-454 :



With 4 modules capacity (Type 45 series) + 2 data jack outlet.



FBG-454ZNA



FBG-454ZBA



FBG-454ZCA



FBG-454ZGA



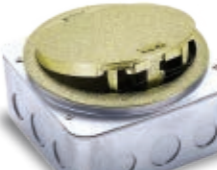
FBG-454ZNC



FBG-454ZBC

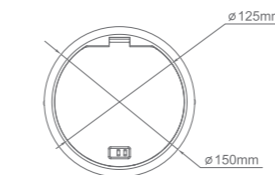
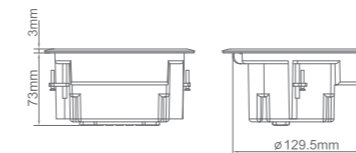


FBG-454ZCC

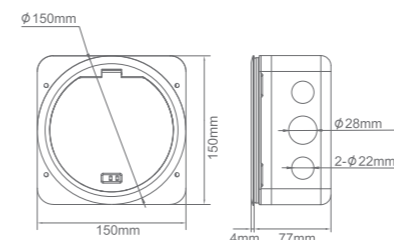


FBG-454ZGC

FBG-454ZNA, ZBA, ZCA, ZGA



FBG-454ZNC, ZBC, ZCC, ZGC



Various type 45 modules options:



Model	Color	Material	Application	Cutout(mm)
FBG-454ZNA	Silver(Nickel plated)	Zinc Alloy	Access Floor	ø 130
FBG-454ZBA	Old Brass(Old brass coated)	Zinc Alloy	Access Floor	ø 130
FBG-454ZCA	Red Copper(Copper plated)	Zinc Alloy	Access Floor	ø 130
FBG-454ZGA	Gold	Zinc Alloy	Access Floor	ø 130
FBG-454ZNC	Silver(Nickel plated)	Zinc Alloy	Concrete Floor	ø 130
FBG-454ZBC	Old Brass(Old brass coated)	Zinc Alloy	Concrete Floor	ø 130
FBG-454ZCC	Red Copper(Copper plated)	Zinc Alloy	Concrete Floor	ø 130
FBG-454ZGC	Gold	Zinc Alloy	Concrete Floor	ø 130



WATERPROOF SERIES

LV-FBG-455 :



FBG-455ZNA



FBG-455ZBA



FBG-455ZCA



With 3 modules capacity (Type 45 series).



FBG-455ZGA



FBG-455ZNC



FBG-455ZBC



IP65



IK10



FBG-455ZCC

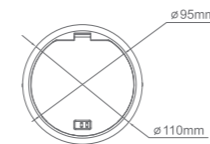
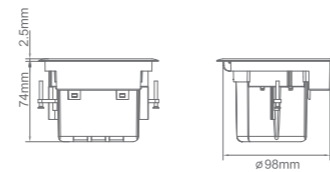


FBG-455ZGC

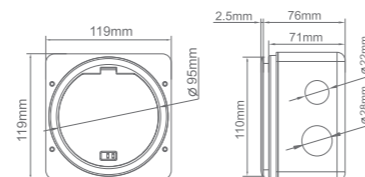
Model	Color	Material	Application	Cutout(mm)
FBG-455ZNA	Silver(Nickel plated)	Zinc Alloy	Access Floor	∅ 100
FBG-455ZBA	Old Brass(Old brass coated)	Zinc Alloy	Access Floor	∅ 100
FBG-455ZCA	Red Copper(Copper plated)	Zinc Alloy	Access Floor	∅ 100
FBG-455ZGA	Gold	Zinc Alloy	Access Floor	∅ 100
FBG-455ZNC	Silver(Nickel plated)	Zinc Alloy	Concrete Floor	∅ 100
FBG-455ZBC	Old Brass(Old brass coated)	Zinc Alloy	Concrete Floor	∅ 100
FBG-455ZCC	Red Copper(Copper plated)	Zinc Alloy	Concrete Floor	∅ 100
FBG-455ZGC	Gold	Zinc Alloy	Concrete Floor	∅ 100



FBG-455ZNA, ZBA, ZCA, ZGA

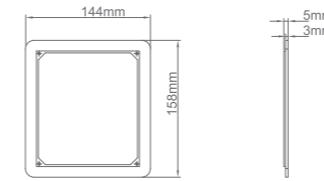


FBG-455ZNC, ZBC, ZCC, ZGC

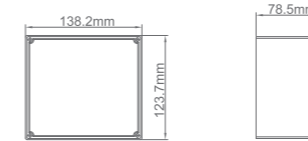


WATERPROOF SERIES

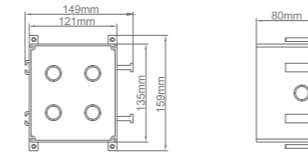
Optional base boxes



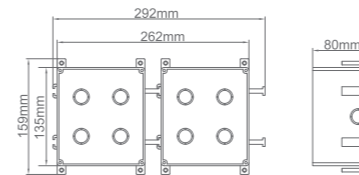
FBG-456BK



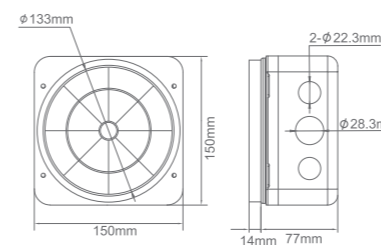
FBG-456R1



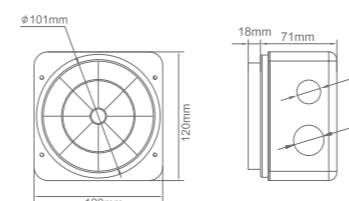
FBG-456B135



FBG-456B135 (Two Gangs)



FBG-456B150



FBG-456B120



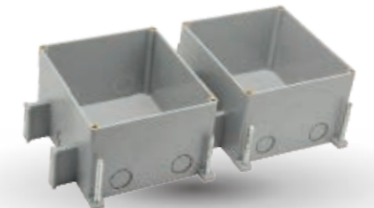
FBG-456BK
Access floor fixing bracket



FBG-456R1
Extension ring



FBG-456B135
Gangable concrete floor box
Suitable models: FBG-452, FBG-453



FBG-456B135 (Two Gangs)
Gangable concrete floor box
Suitable models: FBG-452, FBG-453



FBG-456B150
Suitable models: FBG-454



FBG-456B120
Suitable models:FBG-455

Model	Material	Application
FBG-456BK	Zinc Alloy	Fixing part for access floor
FBG-456R1	ABS	Extension ring (increase extra height)
FBG-456B135	ABS	Concrete Floor
FBG-456B135 (Two Gangs)	ABS	Concrete Floor
FBG-456B150	Galvanized Steel	Concrete Floor
FBG-456B120	Galvanized Steel	Concrete Floor

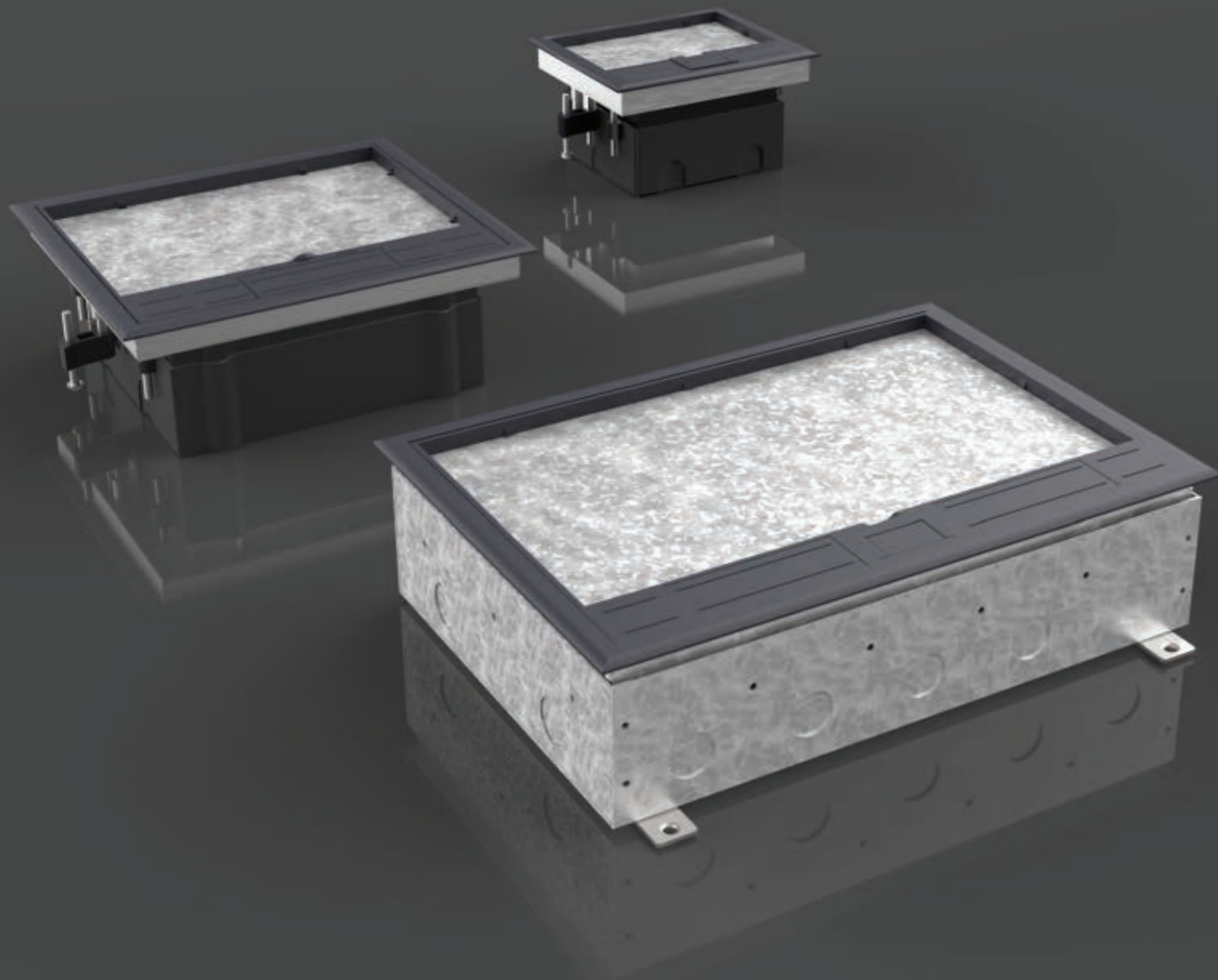
INTEGRATED FLOOR OUTLET BOXES

Our complete range of floor outlet boxes offer a convenient and flexible solution for managing power, data and multimedia requirements in modern office environment, as well as many other applications including computer rooms, shopping malls, conference centers, schools and commercial office buildings.

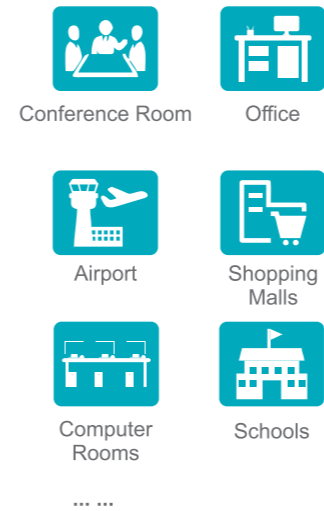
Designed for both raised access and concrete floor applications, our floor boxes come in range of sizes to accommodate different mounting plates and wiring accessories.

Equipped with a recessed flip handle for easy accessibility and a retaining guard to protect cables while they are connected.

The sturdy cover features a recessed space to accept floor covering to match the surrounding floor providing a smooth, seamless look.

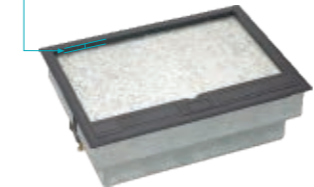


Suitable for installation within:

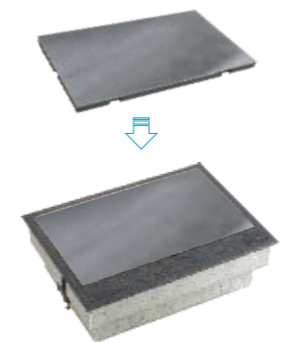


Recessed space on cover panel, Accepts various floor coverings.

8mm recess depth(Regular model)



Stainless steel surface ABS plate (on request)

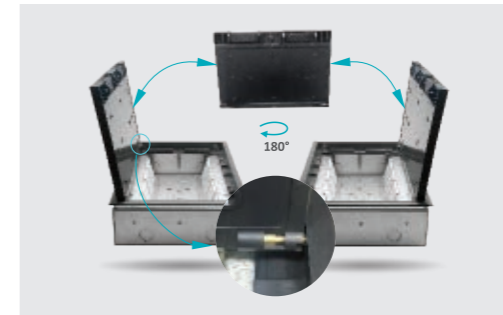


Other features

- Low profile beveled flange.
- Galvanized lid insert plate for extra strength.
- Clamp fixing for quick installation in access floors.
- Durable galvanized steel housing for SCF-245C and SCF-320C models.

INTEGRATED SERIES

Features



- ◀ **Removable and reversible lid:**
The lid can be rotated with no tools for easy outgoing cables orientation.



- ◀ **Retaining Cable Guard:**
Protect cables and reduce risk of damage to all incoming and outgoing cables.



- ◀ **Easy grip recessed lifting handle:**
Equipped with recessed flip handle to facilitate the access to box services.



- ◀ **Sturdy design structure:**
Equipped with galvanized steel support on the backside of lid frame which provides more robustness.



- ◀ **Height adjustable base-box:**
Allows to level up the unit with your floor surface. Available with floor box for access floor applications.
**The above feature are not applicable for SCF-245C, SCF-320C floor box.*

INTEGRATED SERIES

LV-FBG-269P :



▲ FBG-269P

Model	Color	Material*	Module capacity	Cutout(mm)
FBG-269P	Dark Blue	ABS+PC	8	159x131

*Material: Galvanized steel support on the backside of lid frame.



Features

Application: Access Floor

Approval: TUV, CE

IK10



FBG-269F

Modular Socket (Type 45)

Features

Application: Access Floor

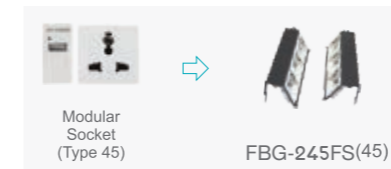
Approval: TUV, CE

IK10



Modular Socket (Type 45)

FBG-245F(45)



Modular Socket (Type 45)

FBG-245FS(45)



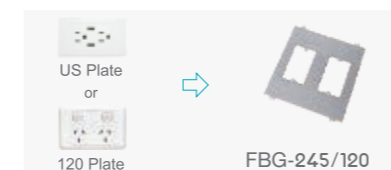
Switched Socket (Type 86)

FBG-245/86A



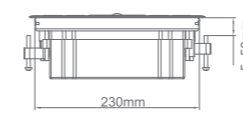
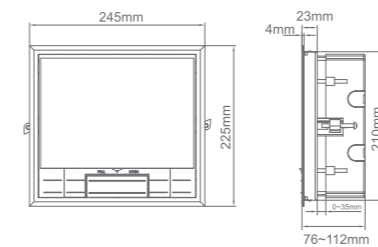
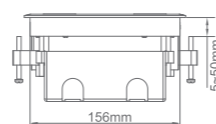
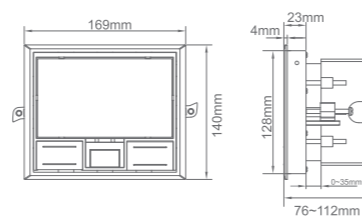
Twin Switched Socket (Type 86)

FBG-245/86B



US Plate or 120 Plate

FBG-245/120



INTEGRATED SERIES

LV-FBG-245P :



▲ FBG-245P



▲ FBG-245PS



▲ FBG-245P/86A



▲ FBG-245P/86B



◀ FBG-245P/120

Model	Color	Material*	Module Capacity	Compartment	Cutout(mm)
FBG-245P	Dark Blue	ABS+PC	12	-	233x213
FBG-245PS	Dark Blue	ABS+PC	12	-	233x213
FBG-245P/86A	Dark Blue	ABS+PC	-	4	233x213
FBG-245P/86B	Dark Blue	ABS+PC	-	2	233x213
FBG-245P/120	Dark Blue	ABS+PC	-	2	233x213

*Material: Galvanized steel support on the backside of lid frame.



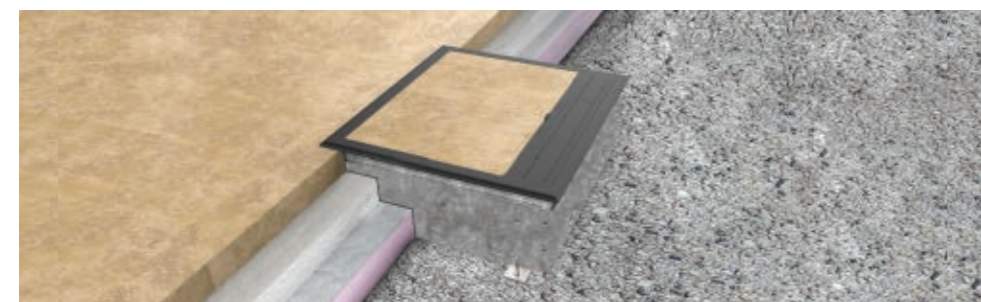
INTEGRATED SERIES

LV-FBG-245C:



Model	Color	Material*	Module Capacity	Compartment	Cutout(mm)
FBG-245C	Dark Blue	ABS+PC(Lid)	12	-	233x213
FBG-245CS	Dark Blue	ABS+PC(Lid)	12	-	233x213
FBG-245C/86A	Dark Blue	ABS+PC(Lid)	-	4	233x213
FBG-245C/86B	Dark Blue	ABS+PC(Lid)	-	2	233x213
FBG-245C/120	Dark Blue	ABS+PC(Lid)	-	2	233x213

*Material: ABS+PC (Cover Lid) / Galvanized Steel (Base Box including lid support plate)

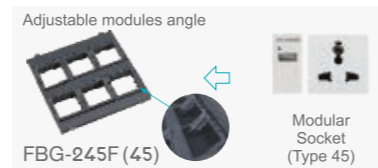


Features

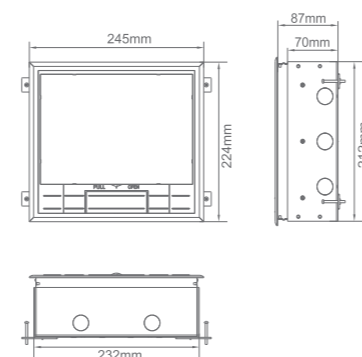
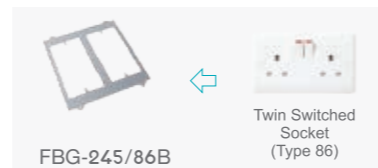
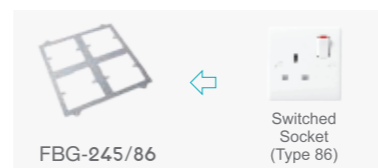
Application: Concrete Floor

Approval: TUV mark

IK10



*Straight angled power plugs are not compatible with this module frame.

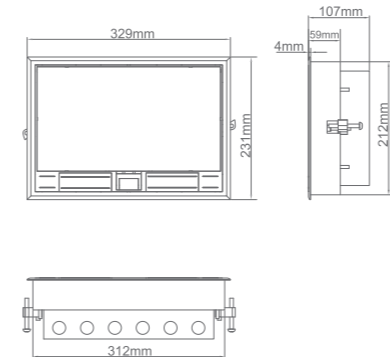
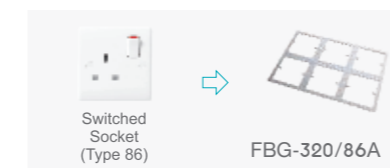
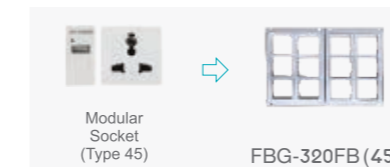
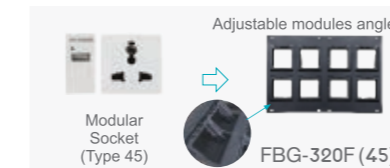


Features

Application: Access Floor

Approval: TUV, CE

IK10



INTEGRATED SERIES

LV-FBG-320P:



Model	Color	Material*	Module Capacity	Compartment	Cutout(mm)
FBG-320P	Dark Blue	ABS+PC(Lid)	16	-	313x218
FBG-320P/24	Dark Blue	ABS+PC(Lid)	24	-	313x218
FBG-320P/86A	Dark Blue	ABS+PC(Lid)	-	6	313x218
FBG-320P/86B	Dark Blue	ABS+PC(Lid)	-	3	313x218
FBG-320P/120	Dark Blue	ABS+PC(Lid)	-	4	313x218

*Material: ABS+PC (Cover Lid) / Galvanized Steel (Base Box including lid support plate)



INTEGRATED SERIES

LV-FBG-320PP:



Model	Color	Material*	Module Capacity	Compartment	Cutout(mm)
FBG-320PP	Dark Blue	ABS+PC	16	-	313x218
FBG-320P/FB	Dark Blue	ABS+PC	24	-	313x218
FBG-320PP/86A	Dark Blue	ABS+PC	-	6	313x218
FBG-320PP/86B	Dark Blue	ABS+PC	-	3	313x218
FBG-320PP/120	Dark Blue	ABS+PC	-	4	313x218

*Material: Galvanized steel support on the backside of lid frame.

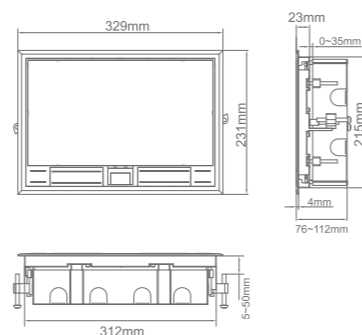
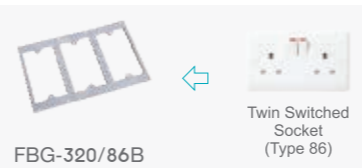
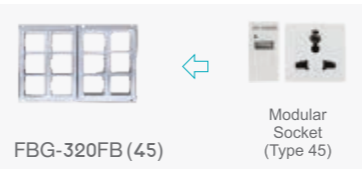
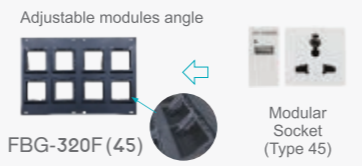


Features

Application: Access Floor

Approval: TUV, CE

IK10

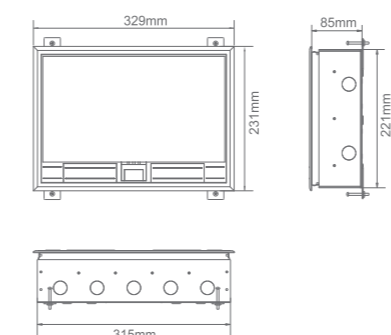
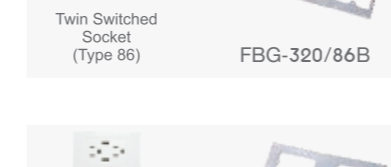
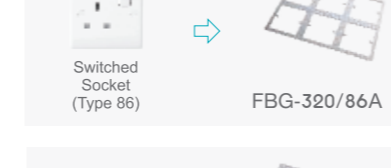


Features

Application: Concrete Floor

Approval: TUV mark

IK10



INTEGRATED SERIES

LV-FBG-320C:



Model	Color	Material*	Module Capacity	Compartment	Cutout(mm)
FBG-320C	Dark Blue	ABS+PC(Lid)	16	-	315x221
FBG-320C/FB	Dark Blue	ABS+PC(Lid)	24	-	315x221
FBG-320C/CS	Dark Blue	ABS+PC(Lid)	16	-	315x221
FBG-320C/86A	Dark Blue	ABS+PC(Lid)	-	6	315x221
FBG-320C/86B	Dark Blue	ABS+PC(Lid)	-	3	315x221
FBG-320C/120	Dark Blue	ABS+PC(Lid)	-	4	315x221

*Material: ABS+PC (Cover Lid) / Galvanized Steel (Base Box including lid support plate)

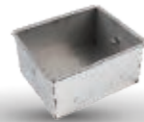


INTEGRATED SERIES

Optional base boxes



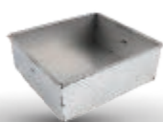
FBG-369GC
Galvanized steel base box for concrete floor(on demand).
Suitable models: FBG-269P



FBG-369GC-QG
Galvanized steel base box for concrete floor(on demand).
Suitable models: FBG-269P



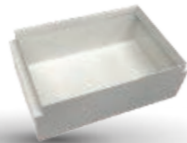
FBG-345GC
Galvanized steel base box for concrete floor (on demand).
Suitable models: FBG-245P



FBG-345QC-GC
Galvanized steel base box for concrete floor(on demand).
Suitable models: FBG-245P



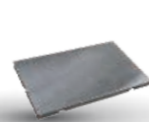
FBG-320GC
Galvanized steel base box for concrete floor (on demand).
Suitable models: FBG-320PP



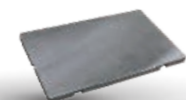
FBG-320PGC
Galvanized steel base box for concrete floor (on demand).
Suitable models: FBG-320P



FBG-320GC-QG
Galvanized steel base box for concrete floor(on demand).
Suitable models: FBG-320P
FBG-320PP



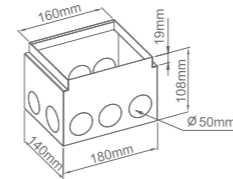
FBG-369S
8mm polished Stainless steel surface ABS plate for decorating the top lid(on request).
Suitable models: FBG-369P



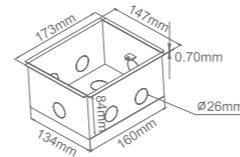
FBG-345S
8mm polished Stainless steel surface ABS plate for decorating the top lid(on request).
Suitable models: FBG-245



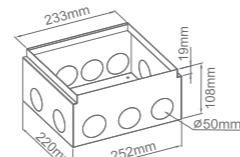
FBG-320S
8mm polished Stainless steel surface ABS plate for decorating the top lid(on request).
Suitable models: FBG-320



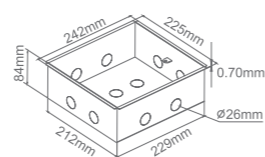
FBG-369GC



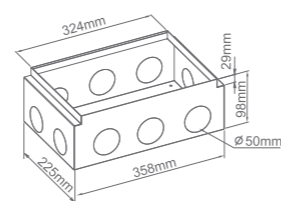
FBG-369GC-QG



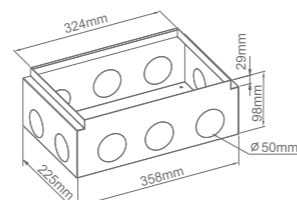
FBG-345GC



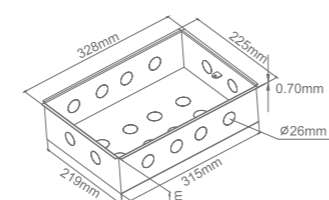
FBG-345QC-GC



FBG-320GC



FBG-320PGC



FBG-320GC-QG

Model	Material	Application	Dimension (mm)
FBG-369GC	Galvanized Steel	Concrete Floor	180×140×108
FBG-369GC-QG	Stainless Steel	Concrete Floor	160×134×84
FBG-345GC	Galvanized Steel	Concrete Floor	252×220×108
FBG-345/GC-QG	Stainless Steel	Concrete Floor	229×212×84
FBG-320C/GC	Galvanized Steel	Concrete Floor	358×225×98
FBG-320PGC	Galvanized Steel	Concrete Floor	358×225×98
FBG-320GC-QG	Stainless Steel	Concrete Floor	315×225×98
FBG-369S	Stainless Steel + ABS	Fill in the top lid recessed area	140×80×8
FBG-345S	Stainless Steel + ABS	Fill in the top lid recessed area	210×150×8
FBG-320S	Stainless Steel + ABS	Fill in the top lid recessed area	140×80×8

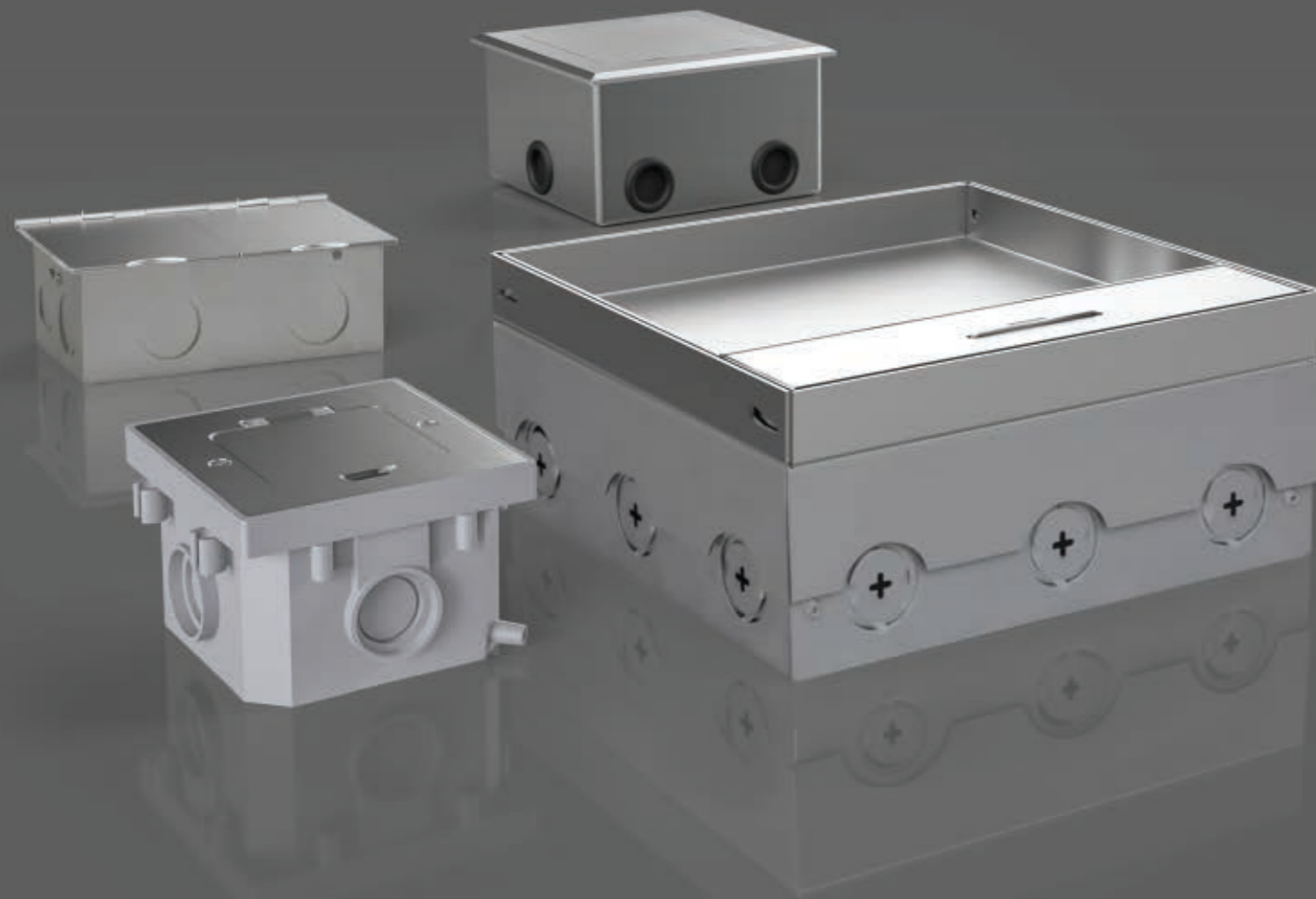


OPEN TYPE FLOOR BOXES

Our extensive range of floor boxes is a versatile and function solution which provides ready access to power, data and multimedia outlets recessed in concrete floors.

Designed for use in workstation, conference rooms, or in any commercial settings, our floor boxes come in a range of models and sizes to accommodate various Type 45 series modules to meet all your essential needs.

Features durable and robust construction to ensure longer product lifespan.



Suitable for installation within:



Meeting Rooms



Office



Living Room



Bedroom



Study Room



Library

... ..

These units come in stylish brushed nickel, metallic silver, red copper, old brass, or matte black finish making for the perfect match to any flooring or surface.



Brushed Nickel



Metallic Silver



Red Copper



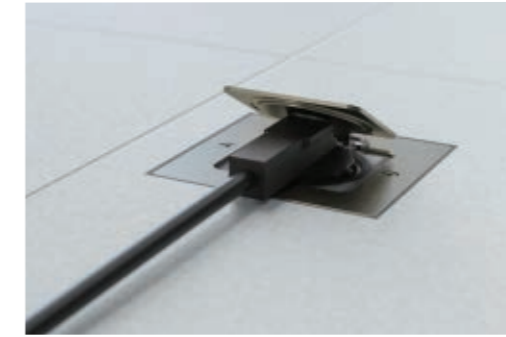
Old Brass



Matte Black

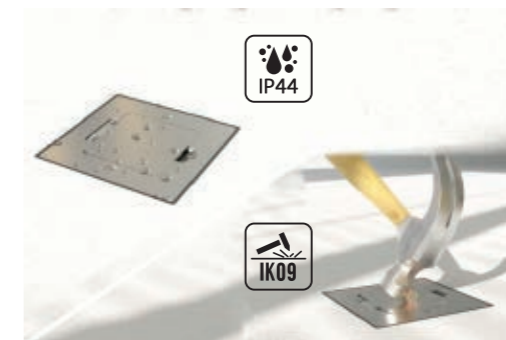
OPEN TYPE SERIES

Features



◀ **Sleek and low-profile design:**

Designed for user friendliness, this easy and accessible solution not only improves the functionality of spaces where fixed power is needed, but also increases its aesthetic appearance.



◀ **Durable and compact construction:**

This floor socket has high mechanical impact resistance rating of IK09 and an ingress protection rating of IP44, when in closed status.



◀ **Spring loaded hinged cover panel:**

The spring-loaded cover can be opened up to 180° which allows for optimum ease of access. When not needed, the cover flips back down for a nice clean look in your floor.



◀ **Push-Click-Connect:**

With the option of push-click-connect, the floor sockets can be flexibly configured to create multiple gang unit in concrete floors and expand efficacy for specific applications.

OPEN TYPE SERIES

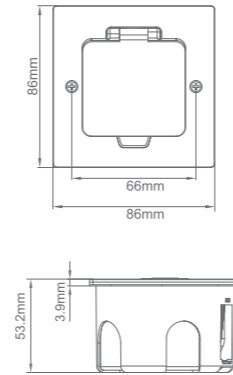
LV-FBG-652A :



Model	Color	Material	Module Capacity	Cutout(mm)
FBG-652ZNA	Brushed Nickel	Zinc alloy	2	∅80
FBG-652ZSA	Metallic Silver	Zinc alloy	2	∅80
FBG-652ZCA	Red Copper	Zinc alloy	2	∅80
FBG-652ZBA	Old Brass	Zinc alloy	2	∅80
FBG-652ZMBA	Matte Black	Zinc alloy	2	∅80

Features

IP44 IK09
Applications: Access Floors, Walls or Furniture
Compatible with Type 45 series module



Base box

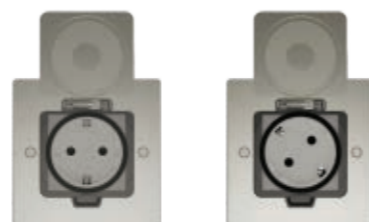


Round type
For raised access floor or wall installation

Model	Material	Dimension(mm)
Round type	ABS+PC	∅80

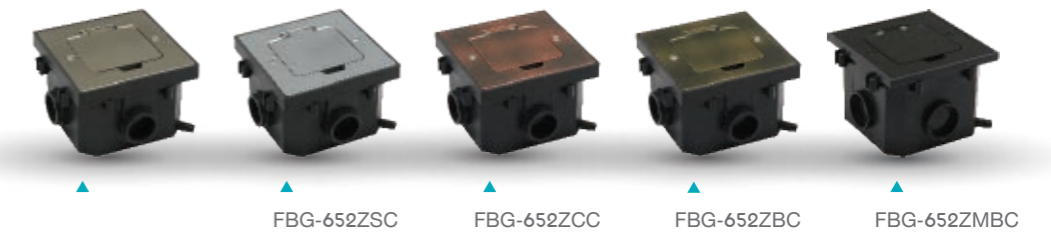


Exemplary module configuration



OPEN TYPE SERIES

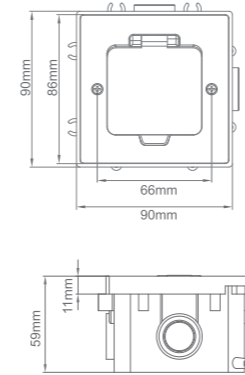
LV-FBG-652C :



Model	Color	Material	Module Capacity	Cutout(mm)
FBG-652ZNC	Brushed Nickel	Zinc alloy	2	91X91
FBG-652ZSC	Metallic Silver	Zinc alloy	2	91X91
FBG-652ZCC	Red Copper	Zinc alloy	2	91X91
FBG-652ZBC	Old Brass	Zinc alloy	2	91X91
FBG-652ZMBC	Matte Black	Zinc alloy	2	91X91

Features

IP44 IK09
Application: Concrete Floors
Compatible with Type 45 series module



Base box

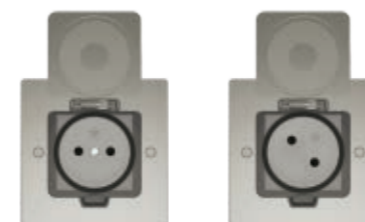


Square type
For concrete floor installation

Model	Material	Dimension(mm)
Square type	ABS+PC	90x90



Exemplary module configuration



OPEN TYPE SERIES

LV-FBG-711:



FBG-711S



FBG-711B

Model	Color	Material	Module Capacity	Cutout(mm)
FBG-711S	Silver	Stainless Steel	2	77x80
FBG-711B	Gold	Brass Alloy	2	77x80

LV-FBG-722:



FBG-722S



FBG-722B

Model	Color	Material	Module Capacity	Cutout(mm)
FBG-722S	Silver	Stainless Steel	4	137x80
FBG-722B	Gold	Brass Alloy	4	137x80

Base boxes



FBG-722B11

Suitable models: FBG-711



FBG-722B22

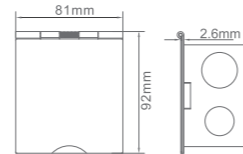
Suitable models: FBG-722

Model	Material	Dimension(mm)
B11	Galvanized Steel	75x77x50
B22	Galvanized Steel	135x77x50

Features

Approval: TUV, CE

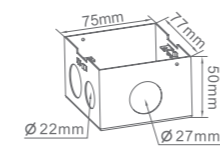
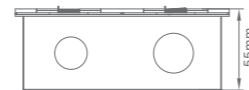
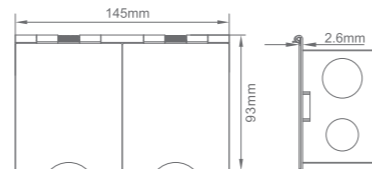
Application: Concrete Floor or Wall



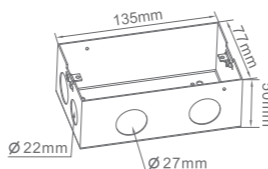
Features

Approval: TUV mark, CE-LVD

Application: Concrete Floor or Wall



B11



B22

Suitable for installation within:



Meeting Rooms



Office



Library



Shopping Centers



Hospital



Banks

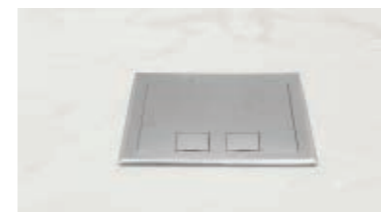
...



FBG-720S



FBG-745S



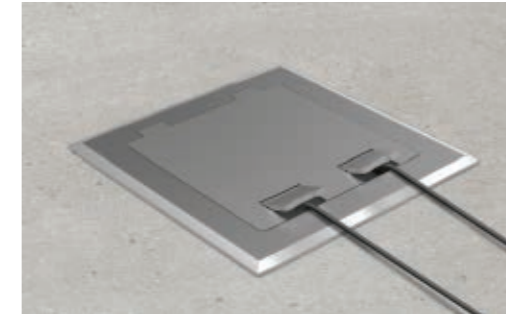
FBG-746S



FBG-780S

OPEN TYPE SERIES

Features



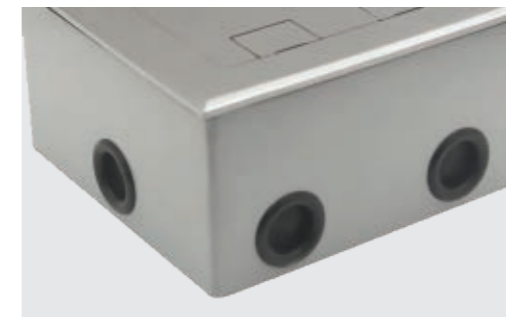
Easy cable orientation:

The lid features cord outlet flap which allows easily cables to exit when connected.



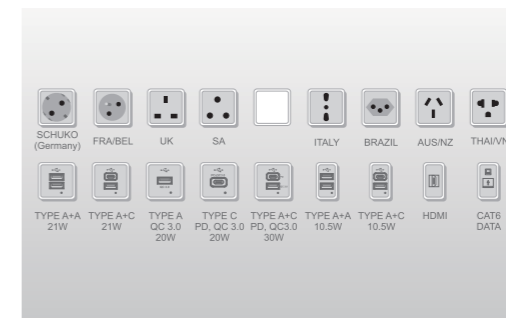
Low profile beveled flange:

Cover top features low profile beveled flange to prevent tripping hazards.



Sturdy Galvanized steel housing:

The base box construction is made from galvanized steel, which delivers added strength and reliability.



Choose more:

Extensive range of modules option.

**The modules shown do not represent all, please consult our sales representative for more modules information.*

OPEN TYPE SERIES

LV-FBG-720:



FBG-720S



FBG-720B

Model	Color	Material	Module Capacity	Cutout(mm)
FBG-720S	Silver	Stainless Steel	3	114x114
FBG-720B	Gold	Brass Alloy	3	114x114

LV-FBG-725CS:



FBG-725CS

Model	Color	Material	Module Capacity	Cutout(mm)
FBG-725CS	Silver	Stainless Steel	4	132x132

LV-FBG-745:



FBG-745S



FBG-745B

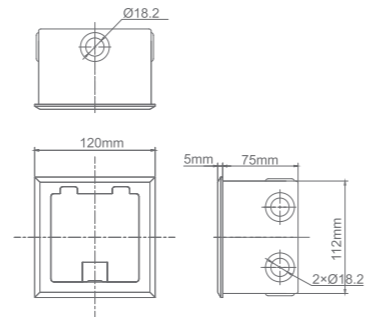
Model	Color	Material	Module Capacity*	Cutout(mm)
FBG-745S	Silver	Stainless Steel	6	139x203
FBG-745B	Gold	Brass Alloy	6	139x203

*Also available with 8 modules capacity frame upon request. Please consult our sales representative for more details.

Features

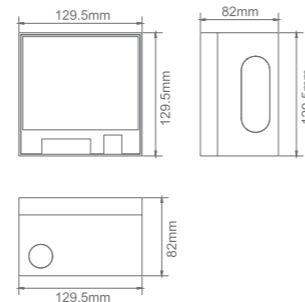
Approval: TUV, CE

Application: Concrete Floor



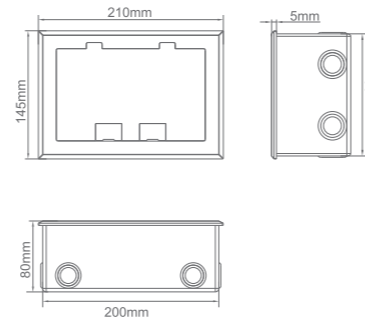
Features

Application: Concrete Floor



Features

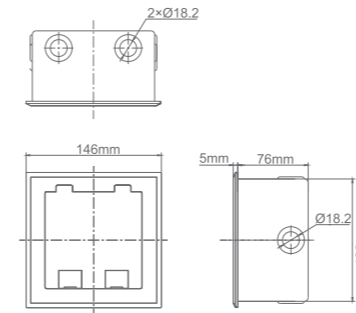
Application: Concrete Floor



Features

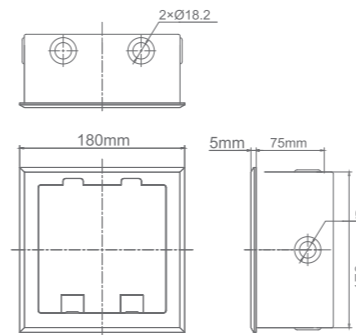
Approval: TUV, CE

Application: Concrete Floor



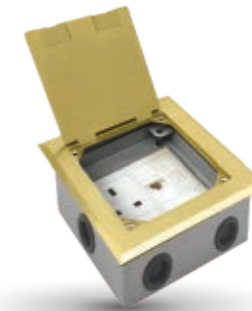
Features

Application: Concrete Floor



OPEN TYPE SERIES

LV-FBG-746:



FBG-746S



FBG-746B

Model	Color	Material	Module Capacity	Cutout(mm)
FBG-746S	Silver	Stainless Steel	6	135x135
FBG-746B	Gold	Brass Alloy	6	135x135



LV-FBG-780:



FBG-780S

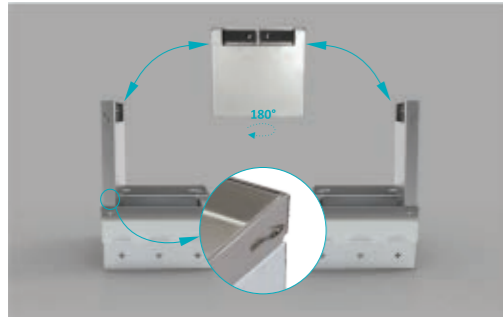


FBG-780B

Model	Color	Material	Module Capacity	Cutout(mm)
FBG-780S	Silver	Stainless Steel	10	173x173
FBG-780B	Gold	Brass Alloy	10	173x173

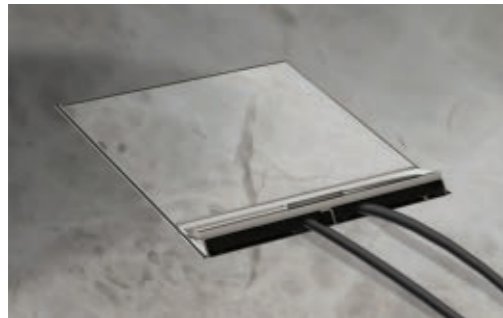
OPEN TYPE SERIES

Features



Removable and reversible lid:

The lid can be rotated with no tools for easy outgoing cables orientation.



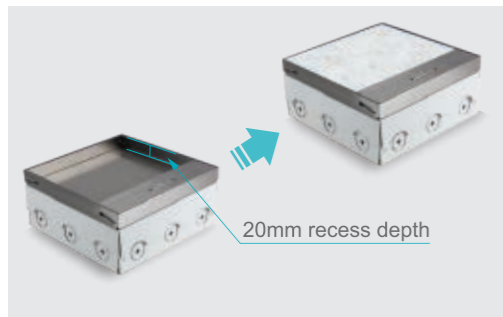
Elongated cable door:

Provides a spacious pathway and protection for exiting cables.



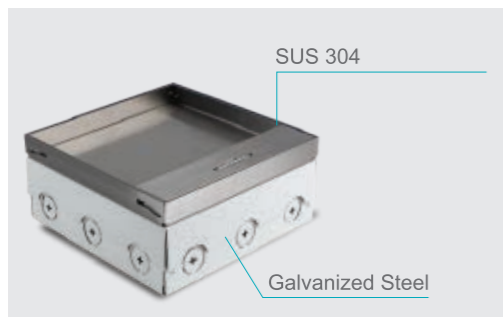
Easy grip recessed lifting handle:

Equipped with recessed handle to facilitate the access to box services.



Accepts various floor coverings:

Aesthetic cover features a recess to accept floor covering to match the surrounding floor providing a smooth, seamless look.



Durable and Anti-Corrosive construction:

The structural design of the floor box is combined with cover panel made from SS304 stainless steel and base box made from galvanized steel, which ensures longevity and exceptional resistance against corrosion.

Suitable for installation within:



Conference Room



Office



Airport



Shopping Malls



Hospital



Schools

... ..

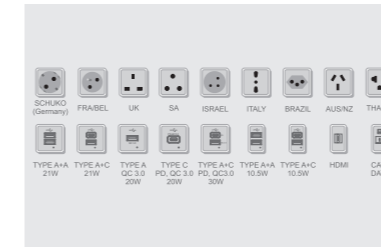


The unit lies nearly flush with the surface for a discreet and tidy appearance.

Features

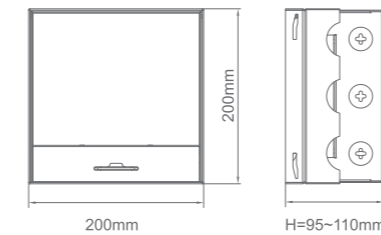
Adjustable Base Box

Application: Screed Concrete Floor



Extensive range of modules option.

**The modules shown do not represent all, please consult our sales representative for more modules. information.*



OPEN TYPE SERIES

LV-FBG-800 :



FBG-800S

Model	Color	Material*	Module Capacity	Cutout(mm)
FBG-800S	Silver	Stainless Steel + Galvanized Steel	12	203x203

**SS304 Stainless Steel (Cover panel), Galvanized Steel (Base Box).*



FLIP-UP FLOOR BOXES

Our floor boxes are small, yet it still provides a functional and economical solution for power and data requirements with unsurpassed flexibility for connections through concrete floors.



FLIP-UP BOXES

Features

Suitable for installation within:



Meeting Rooms



Office



Library



Store



Living Room



Airport Lounge



Compact Size with Large Capacity:

Even though this floor box is compact in size, it can accommodate up to 6 modules from Type 45 series to meet all your essential requirements.

**This unit can be customized with Type 128 modules using appropriate module card frame. Please consult our sales representative for more details.*

Available in four finishes:



Silver



Gold



Silver (nickel plated)



Matte Black



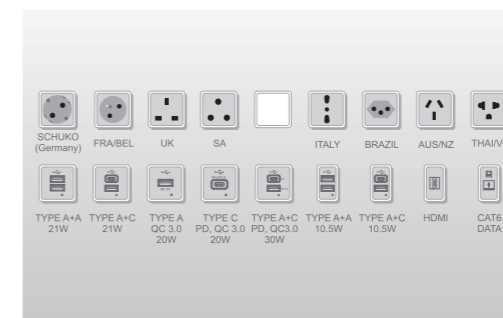
Stylish and low-profile appearance:

The sleek & flat designed cover top with beveled edges allows the unit to mount flush with the floor surface, creating a seamless blend to its unique & impressive design.



Quick and easy access:

Equipped with double easy to use flip-up lids which provides instant access to outlets when required.



Choose more:

Extensive range of modules option.

**The modules shown do not represent all, please consult our sales representative for more modules information.*

FLIP-UP BOXES

LV-FBG-852 :



▲ FBG-852BC



▲ FBG-852LC

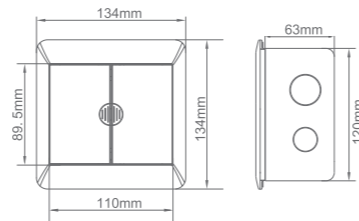


▲ FBG-852BNC



▲ FBG-852LMBC

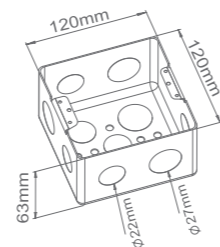
Model	Color	Material	Application	Cutout(mm)
FBG-852BC	Gold	Brass Alloy	Concrete Floor	123x123
FBG-852LC	Silver	Aluminum Alloy	Concrete Floor	123x123
FBG-852BNC	Silver(Nickel Plated)	Brass Alloy	Concrete Floor	123x123
FBG-852LMBC	Matte Black	Aluminum Alloy	Concrete Floor	123x123



Base box



▲ FBG-852B120
Suitable models: FBG-852



▲ B120

Model	Material	Application	Dimension(mm)
B120	Galvanized Steel	Concrete Floor	120x120x63

LEVANT



**FLOOR
BOXES**

2022-2023