

# LED Roll Over Light



DuLight LED Roll Over Light uses EPISTAR SMDs for outdoor applications. Housing is made of die-cast aluminum with powder color coating. Luminaire uses UV stabilized PC diffuser.

## Product Features:

- EPISTAR SMD LEDs
- Built-in DuLight LED Driver
- Robust housing with drive over feature
- Available in 3 different shapes (One side, two side and four side light)
- Installation: Surface mounted
- Working temperature: -20°C to 50°C
- IP rating: IP67
- IK rating: IK10
- Life span: 30,000 hours

## Applications:



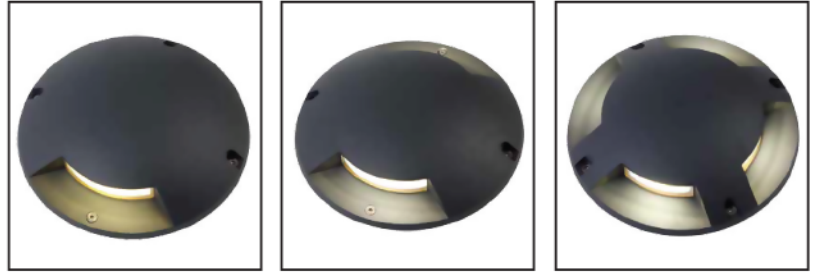
Landscape Lighting



Garages



Shopping Malls Entrance

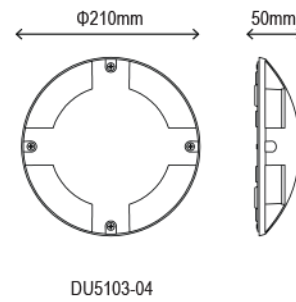
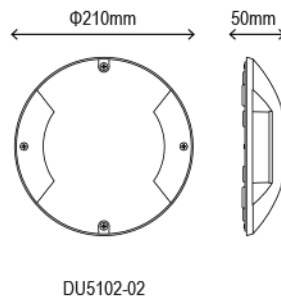
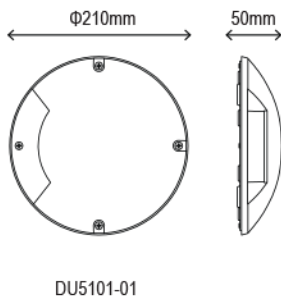


**Housing Colors:**

- Dark Grey
- Black

**EPISTAR**

**Dimensions**



**Technical Specifications**

Model	Power [ W ]	LED type	Luminous flux [ lm ]	Luminous efficacy [ lm/W ]	CCT [ k ]	Beam angle	CRI [ Ra ]	EAN
DU5101-01	1		30	30	3000			6291212000139
DU5102-02	2x1	SMD	70	35	4000	90°	> 80	6291212000146
DU5103-04	4x1		140	35	6000			6291212000153

**Electrical Specifications**

Rated Supply Voltage	220-230V
Input Voltage	140-265V <sub>Ac</sub>
Frequency	50/60Hz