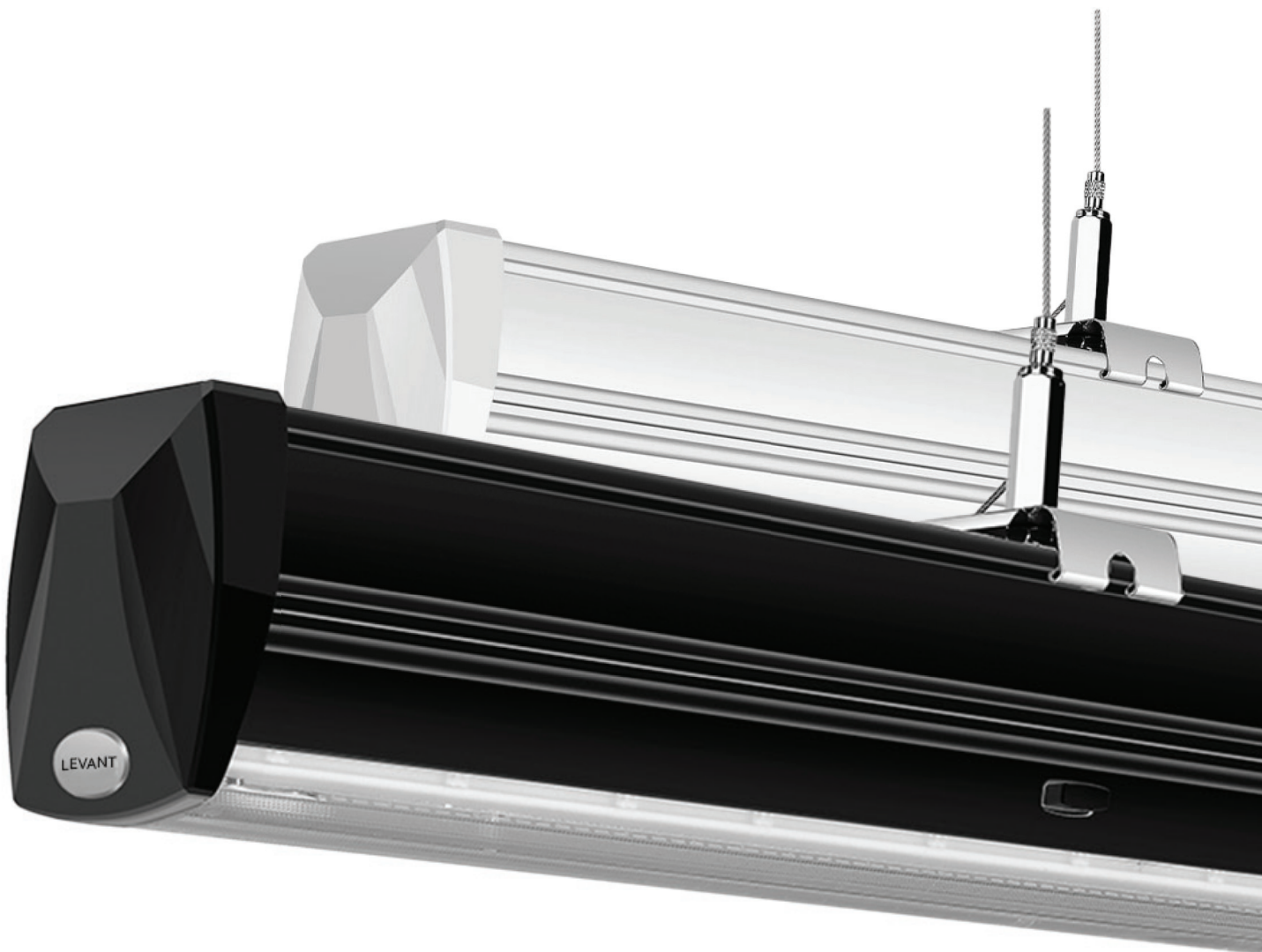


S-LINE LINEAR TRUNKING SYSTEM

Levant Linear Lighting Solution is a modular concept consisting of trunking rails, luminaire inserts and accessories.

All-in-one system including light source, driver, trunk rail, cables, housing and function, easy install and control

● Standard units: 1500mm, 35/50/70W, 160lm/w, input AC220-240
: 1200mm, 30/40/60W, 160lm/w, input AC100-277



■ Product benefits

Europe Standard

50W on/off

- 1500mm - 35/40/45/50W DIP switch driver AC220-240V
- 160LM / 180LM per watt energy saving and cost -effective
- Pre-wired trunking rail, plug & play, tool-free for installation
- L, T, X node connector
- Sharp / narrow / wide / flood / flat / asymmetric / double asymmetric
- CCT: 3000K / 4000K / 6500K
- Track spotlight module, Exit sign module
- Cord / chain / rod / surface mounted / mounting clip
- Total power up to 3500W per line

EAN 1500mm 35W: 6925222104005 - 1500mm 40W: 6925222104012
1500mm 45W: 6925222104029 - 1500mm 50W: 6925222104036

50W DALI

- 1500mm - 50W DALI2.0 DT6 AC220-240V
- 160LM / 180LM per watt energy saving and cost -effective
- Pre-wired trunking rail, plug & play, tool-free installation
- L, T, X node connector
- Sharp / narrow / wide / flood / flat / asymmetric / double asymmetric
- CCT: 3000K / 4000K / 6500K
- Emergency, Track spotlight module, Sensor module, Exit sign module
- Cord / chain / rod / surface mounted / mounting clip
- Total power up to 3500W per line

EAN 1500mm 50W DALI: 6925222104081

70W on/off

- 1500mm - 55W / 60W / 65W / 70W DIP switch driver AC220-240V
- 160LM / 180LM per watt energy saving and cost -effective
- Pre-wired trunking rail, plug & play, tool-free for installation
- L, T, X node connector
- Sharp / narrow / wide / flood / flat / asymmetric / double asymmetric
- CCT: 3000K / 4000K / 6500K
- Track spotlight module, Exit sign module
- Cord / chain / rod / surface mounted / mounting clip
- Total power up to 3500W per line

EAN 1500mm 55W: 6925222104043 - 1500mm 60W: 6925222104050
1500mm 65W: 6925222104067 - 1500mm 70W: 6925222104074

70W DALI

- 1500mm - 70W DALI2.0 DT6 AC220-240V
- 160LM / 180LM per watt energy saving and cost -effective
- Pre-wired trunking rail, plug & play, tool-free for installation
- L, T, X node connector
- Sharp / narrow / wide / flood / flat / asymmetric / double asymmetric
- CCT: 3000K / 4000K / 6500K
- Track spotlight module, Exit sign module
- Cord / chain / rod / surface mounted / mounting clip
- Total power up to 3500W per line

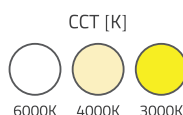
EAN 1500mm 70W DALI: 6925222104098

American Standard

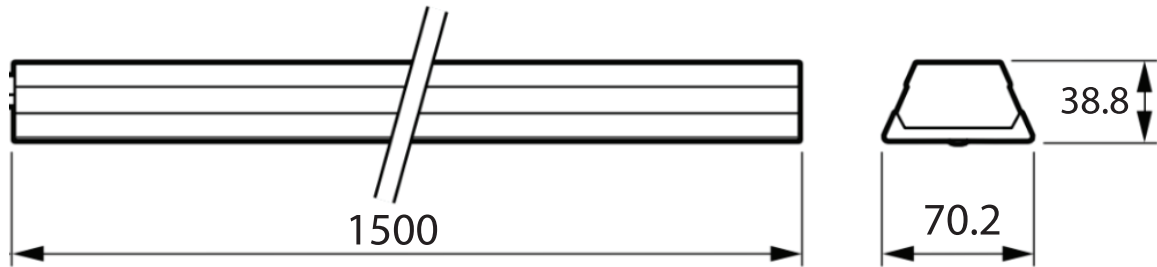
30W / 40W / 60W on/off

- 1200mm - 30W / 40W / 60W AC100-277V
- 160LM / 180LM per watt energy saving and cost -effective
- Pre-wired trunking rail, plug & play, tool-free for installation
- L, T, X node connector
- Sharp / narrow / wide / flood / flat / asymmetric / double asymmetric
- CCT: 3000K / 4000K / 6500K
- Track spotlight module, Exit sign module
- Cord / chain / rod / surface mounted / mounting clip
- Total power up to 1600W per line

EAN 1200mm 30W: 6925222104104 - 1200mm 40W: 6925222104111
1200mm 60W: 6925222104128

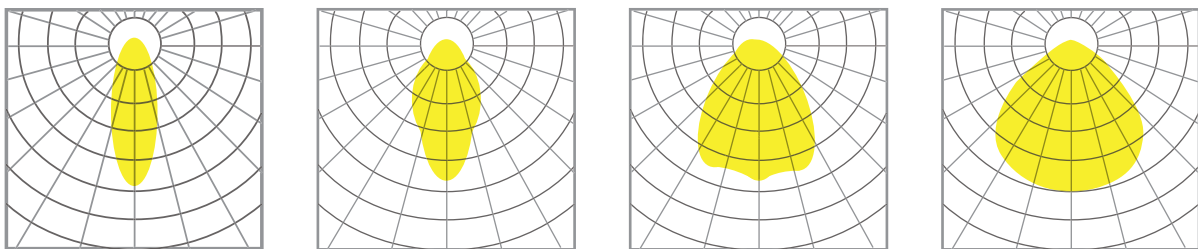


■ Technical Drawing and Features



	L(mm)	GW.(kg)	size(mm)
Europe Standard	600	0.68	600*70*38.8
	900	1.02	900*70*38.8
	1500	1.7	1500*70*38.8
	3000	3.4	3000*70*38.8
	4500	5.1	4500*70*38.8
USA Standard	600	0.68	600*70*38.8
	1200	1.36	1201.7*70*38.8
	2400	2.72	2403.4*70*38.8
	3600	4.08	3605.1*70*38.8

Optic Beam Angle

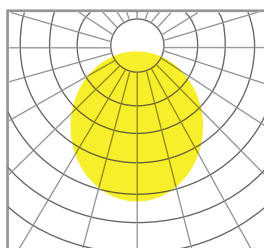


30°

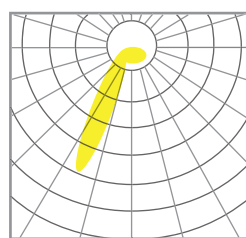
60°

90°

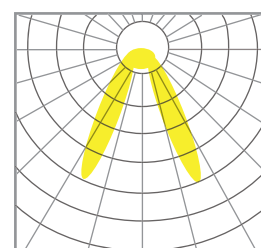
120°



13X110°



Asymmetric
L or R



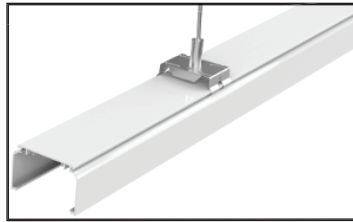
Double
Asymmetric

Trunk Rail

Fix the luminaire and supply the power easily

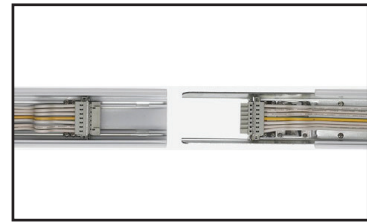


Fixture



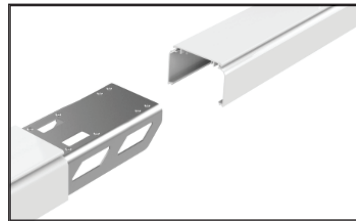
Steel housing

one row one connection point, support max 3500W at the same time, internal cables connect with the male and female connector easily.



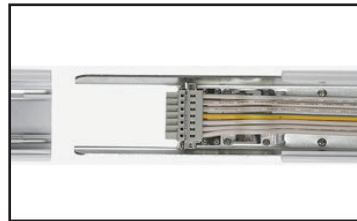
Electrical connector

tools free connection for better cost saving and perfectly maintained the uniformity



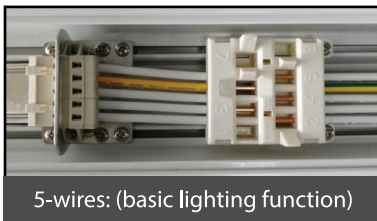
Linkable

no extra wiring needed



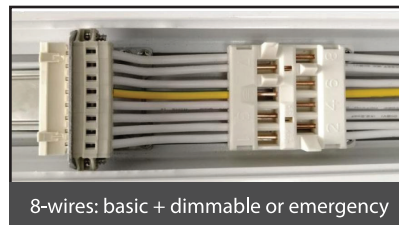
Built-in cables

Cable



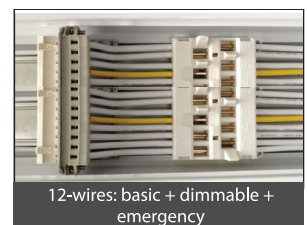
5-wires: (basic lighting function)

L1, L2, L3, N, PE
5*2.5mm²
3 phase selectable



8-wires: basic + dimmable or emergency

L1, L2, L3, N, PE, CHR, Dim+, Dim
6*2.5mm² + 2*1.5mm²
3 phase selectable
2 DALI control cable
1 internal battery emergency power supply



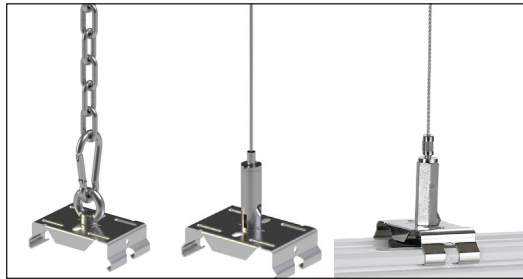
12-wires: basic + dimmable + emergency

L1, L2, L3, N, PE, CHR, Dim+, Dim-, EL1, EN1, EL2, EN2
10*2.5mm² + 2*1.5mm²
3 phase selectable
2 DALI control cable
1 internal battery emergency power supply
2 independent emergency power supply circuit

16A 2.5mm² single core, support max 3500w (eg: 70pcs x 50W)

Support Triple circuit, one row support 3 switches

Accessories



Suspended (Chain, Rod, Cord)



Surface Mounted
(Surface or T-bar)



Feed-in box or
feed-in connector



Close Accessories
End cup - Blank cover



Node Connector
L/T/X

LAMP BODY DIAGRAM



Central line lens optic
Light transmittance 93%
IK04



PC diffuser
Light transmittance 86%
IK08



Individual lens optic
Unique design UGR<19
IK04

MODULE DIAGRAM



- Plug & play function module
- integrated with universal 4 wires/3 phases track rail incl. DALI
- Size in 600, 1500mm module
- Ideal for combining accent and general lighting



- Plug & play function module
- Microwave sensor for motion detection
- Detective range up to 8m or 15m optional
- Uses existing DALI or 1-10V rail wiring
- Up to 64 DALI devices can be controlled



- Plug & play function module
- Flexible structure to hang exit sign
- Uses existing rail wiring



Application  Shopping market  Restaurant  Office  Factoris  School





