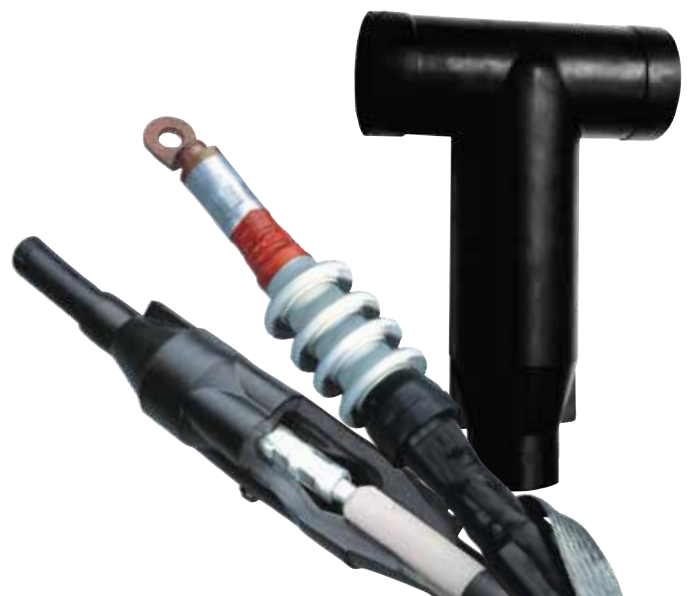




CABLE ACCESSORIES





Integrated Energy Solutions



Since our beginnings as a manufacturer of electrical components in Egypt 80 years ago, Elsewedy Electric has evolved.

into a global provider of energy, digital and infrastructure solutions, generating revenues of approximately 3.8 Billion USD annually. We operate in five key business sectors: Wire & Cable, Electrical Products, Engineering & Construction, Digital Solutions, and Infrastructure Investments. At the heart of our approach is an all-in-one integrated Engineering, Procurement & Construction (EPC) service which enables us to deliver even the most complex projects on time and within budget.

We are pioneers of energy management and efficiency. As part

of our commitment to sustainability we have established green energy and smart metering projects across Africa, the Middle East and Eastern Europe. A vital part of our mission is ensuring that the communities where we operate develop and flourish.

Our growth has been based on sound financials and a commitment to hiring talented individuals. As well as empowering businesses and communities, we have been a major contributor to the Egyptian, African and Middle Eastern economies.

Whichever stage you are at with your project we can help you through to completion and beyond.

A leader in integrated energy solutions

\$3.8 billion
Revenue

23 Giga Watts
Total number of delivered power

4K+ KiloMeters
Overhead Transmission Lines

95+ Substations
Indoor & Outdoor Substations

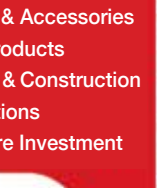
27M Square Meters
Sustainable Industrial Communities

23K+ KiloMeters
Distribution Networks



Integrated Energy Solutions

- Wire, Cable & Accessories
- Electrical Products
- Engineering & Construction
- Digital Solutions
- Infrastructure Investment



About **Cable Accessories**



ELSEWEDY ELECTRIC, cable accessories factory, has been setting the standard for the production of superior under ground cable accessories (joints, terminations & separable elbows, connectors and metal products) in Egypt for the past 25 Years, while providing value added services to the cabling industry through being specialized in cable accessories' production.

Our collaboration with reputable international companies and the quality of our products have been recognized both locally and internationally for high quality and efficiency.

Our product range includes din lugs and connectors, heat shrink shapes, low voltage cable accessories, medium voltage cable accessories, high voltage cable accessories, as well as training for engineers and technicians at our advanced training center.

Our products are ISO certified and tested by KEMA, CESI and IPH.

We utilize state of the art production equipment while adhering to the highest quality standards to ensure premium quality and cost optimization.

We are able to accommodate and adapt our facilities to give our clients the best possible solution for their needs.

Offering Pre-molded technology, which is considered the most efficient method for cable jointing and termination, implemented by our experienced R&D team and through utilizing our group resources.

This method is not dependent on labor skill, as each product is factory tested before delivery. With annual production capacity of over 500,000 units, We are confident to fulfill our client's needs.

Wire, Cable & Accessories Business Unit



We are a global wire and cable manufacturer with more than 40 years of experience in the industry. We pride ourselves superior product quality, innovative solutions, and numerous certifications. Our manufacturing capacity is close to 350k+ Tons annual total capacity located in several countries. We manufacture a range of power & special cables, winding wires, OHTL & OPGW, steel products, insulators, cable accessories, explosion proof equipment and plastics while offering various cabling solutions, covering more than 100 countries.

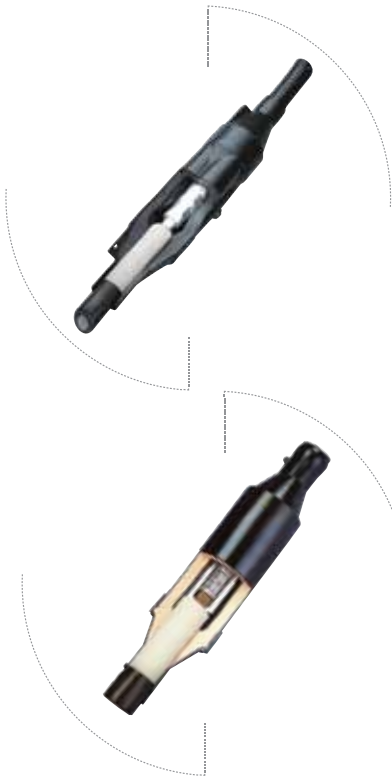
Global Presence



31 PRODUCTION FACILITIES **19** OPERATION COUNTRIES **110** EXPORTING COUNTRIES



● PREMOLDED CABLE JOINTS



Medium Voltage Power Cable Joints

The power cable joints are highly reliable, factory-molded and tested, applicable for 15 kV, 25 kV and 35 (36) kV class distribution systems. When assembled, they provide permanent, fully shielded, fully submersible cable joints for direct burial or vault applications of solid dielectric single-core and three-core cables.

High Voltage Power Cable Joints

Transmission cable joints (TCJ) are designed with optimized stress control and heat transfer capabilities for 72.5 kV. It can be easily installed with no need for a field installer support for joint fabrication. Premolded housing void - free joint housing consists of cured EPBM insulation bonded under pressure to cured molded semiconductive elements.

● PREMOLDED CABLE TERMINATION



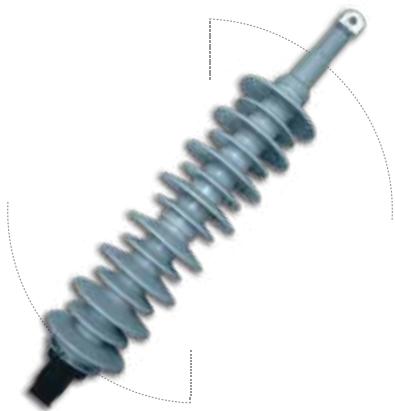
Medium Voltage Modular Termination

Pre-molded cable termination for XLPE, EPR and any polymeric insulation cables, up to 36 kV for both indoor and outdoor applications.

Medium Voltage Single Piece Termination

The single piece termination (ST) with Geometrical stress control is a compact Design in restricted spaces and permits application where free hanging is desired.

The ST termination can be used up to 25 kV for cables cross section up to 630 mm².



High Voltage Transmission Termination

The 69 TCT termination is lightweight and easy to handle. It can be assembled horizontally on the ground and then raised to the installation position without a crane. Installation can be accomplished without special training using a normal assembly/ tension device.

The 69 TCT can utilize standard cable support systems.

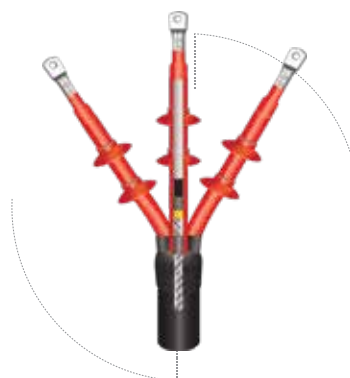
● MEDIUM VOLTAGE HEAT SHRINK TERMINATION

The heat shrink termination is designed for single and three core cable up to 36 kV. This coverage is completed with minimum number of designs. (Pre-expanded versions are available)

The heat s-shrinkable termination has a proven record of long-term stability, durability and reliability over many years, it's designed for both indoor & outdoor applications and for all climate conditions.

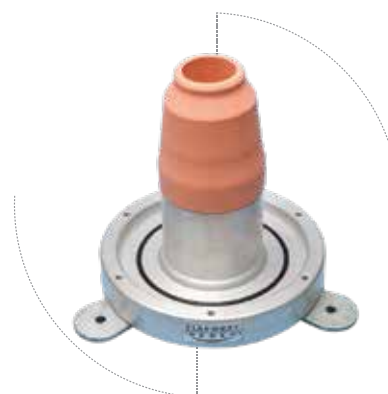
The heat shrink termination is designed to meet or exceed the IEC 4-605023 and IEEE (048 & 404) standards.

It can be easily installed, as there is no special tools or skills needed and fast fitting. Can also apply extra creepage distance by adding extra modular sheds.



● PORCELAIN OUTDOOR SEALING END

SEPT 72 outdoor sealing end porcelain termination for cable systems with rated voltage up to 72.5 kV.



● DEADBREAK SEPARABLE CONNECTORS

L-Shape Elbow 156

156LR elbow connector is a fully-rated 15/25 kV, 250Amp class dead break connector.

Units include provisions for de-energized operation using standard hot stick tools. It has a standard interface for connecting to 15/25 kV, 250 Amp deadbreak bushing inserts, junctions and other accessories. The 156LR is equipped with an integral voltage test point.

Mates with bushing interface conforms to CENELEC END 50181 interface (A).

T-Shape Elbow

The T - body is designed to provide fully-shielded, dead-front submersible cable connections to high-voltage apparatus. It can be used through 36 kV with conductor range up to 630 mm² for aluminum and copper conductors.

L-Shape Elbow 400

The K400 is designed to provide fully-shielded, dead-front submersible cable connections to high-voltage apparatus. The K400LB can be used up to 25 kV for aluminum and copper conductors.

Un-symmetric T-Shape Elbow ET

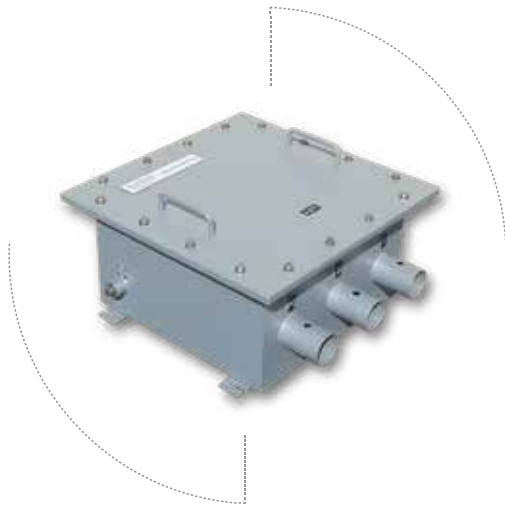
The ET elbow is designed to be suitable for compact panels, which can be used up to 36 kV, 1250 A for aluminum and copper conductors.

Un-symmetric T-Shape Elbow ETC

The ETC elbow is designed to be suitable for compact panels, which can be used up to 25 kV, 630 A for aluminum and copper conductors.



● **LINK BOX**



Link Box is electrically and mechanically one of the integral accessories of HV underground and above ground cable bonding system, associated with HV XLPE power cable systems. We offer an array of its product disconnecting link boxes to complete the desired sheath grounding arrangement, and provide a sealed dry environment for cable metal sheath earthing connections (links). These links may be removed to facilitate cable sheath inspection and testing.

● **HEAT SHRINK PRODUCTS**



Cable Breakout



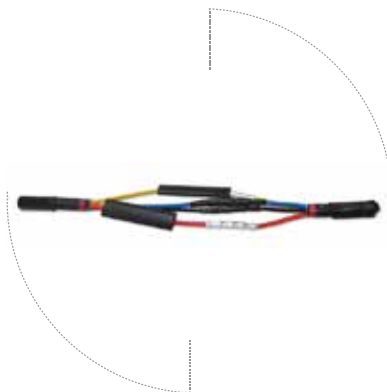
End Caps



Heat Shrink Tubes



Boots



Low Voltage Heat Shrink Joint



Low Voltage Heat Shrink Termination

● **METAL ACCESSORIES**

Copper Metal Accessories



Tubular Copper Lugs



Tubular Copper Connectors



Standard Copper Lugs



Standard Copper Connectors

Aluminum Metal Accessories



Tubular Aluminum Connectors



Tubular Aluminum Lugs

Bi-Metallic Lugs

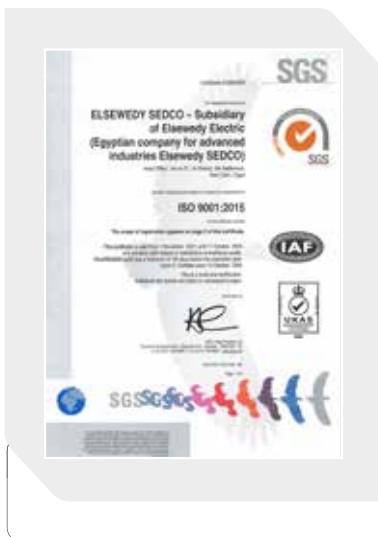


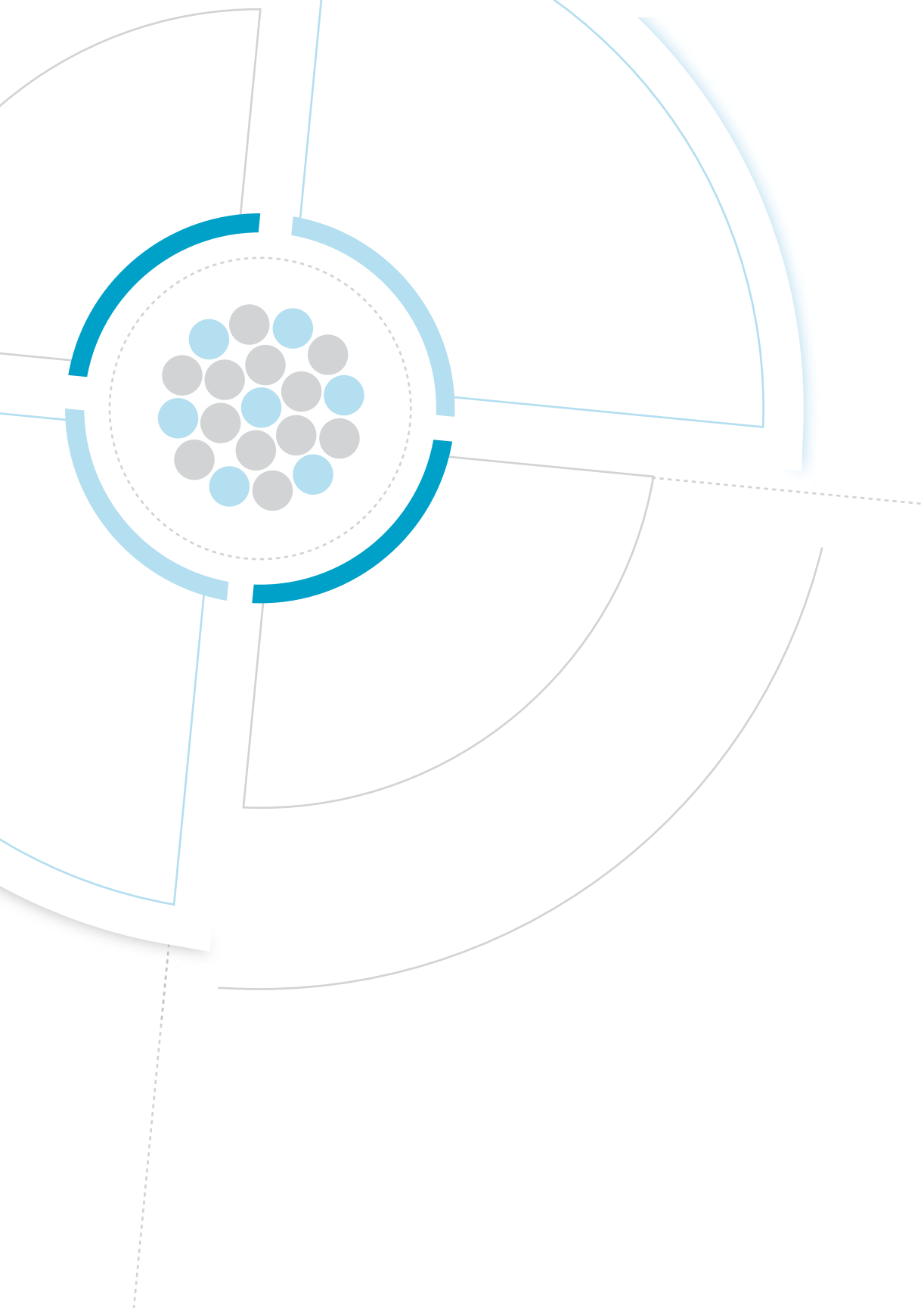
Bi-Metallic Friction Lugs



Bi-Metallic Insert Lugs

● **Cable Accessories Certificates**





ELSEWEDY
ELECTRIC | **CABLE**
ACCESSORIES

Plot 27, 1st district, road 90, 5th Settlement
New Cairo, Cairo - Egypt.
Tel. : +202 275 99 700 / 1
Fax: +202 275 99 743
E-mail: sedco@elsewedy.com
www.elsewedyelectric.com

 **19159**